

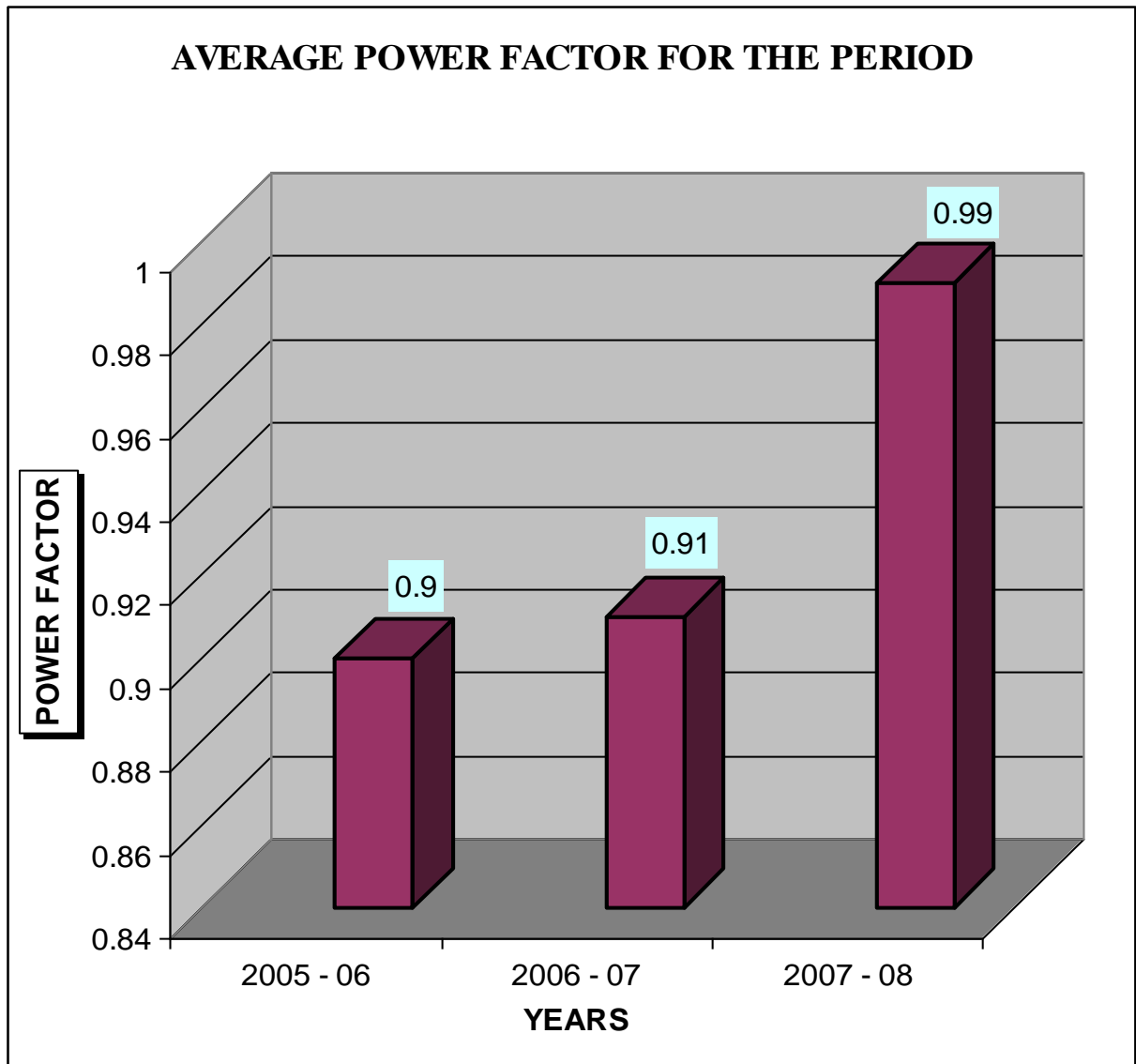
  
**RAMADA**  
caravela beach resort  
G o a

### **Building Profile**

This hotel is built on 85,000 Sq. Mtrs area. Operation commenced from 04<sup>th</sup> December 1990. Currently it offers the Five Star Deluxe Hotel accommodation 202 centrally air-conditioned rooms including 6 villas and 4 suites. The hotel offers Asian delights at the Oriental Hut, Buffet & a la carte Goan Speciality at Lanai & Cafe Cascada, fresh seafood grills at Sossegado, Carnaval, the Indian speciality restaurant, sumptuous buffet with live entertainment at Castaways the poolside. One can spend hours of leisurely bliss at the Atrium Bar, Island Bar and Sunset Bar. Hotel also has facilities like Business Centre, Wi-Fi Connection, Discotheque, In-house Casino 'Goa Nugget', Beauty Parlour, Gift & Book Shop, Swimming Pool, Health Club with Steam, Sauna, Jacuzzi, Gym, Ayurveda treatments & Massages, Children's activity Centre, 9-Hole 27 Par Challenger's Golf course, 2 Flood-lit Tennis Courts, Jogging Track, Water sports (season). Gala events/ conferences & weddings are arranged on the ocean front lawns and the large column free convention hall. This hotel is committed to marking practices and operational excellence in all areas including Environment, Health & Safety. This international 5 Star deluxe resort is winner of **"Greentech Foundation's Silver Award 2008 for outstanding achievement in Environment Management"**.

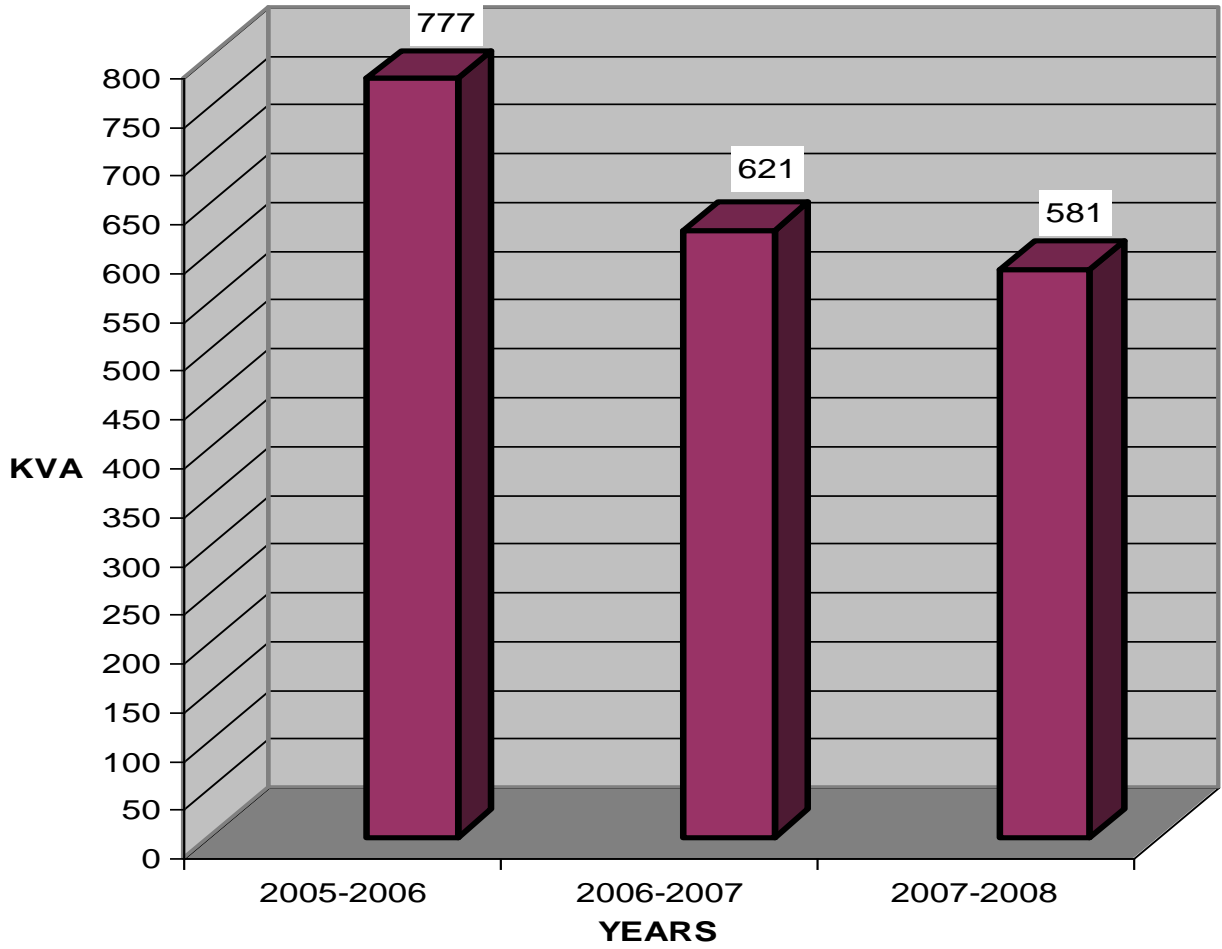


<b>(iii) Average power factor for the period</b>		
2005 - 06	2006 - 07	2007 - 08
0.9	0.91	0.99



<b>ACTUAL AVERAGE POWER DEMAND IN KVA</b>		
2005-2006	2006-2007	2007-2008
777	621	581

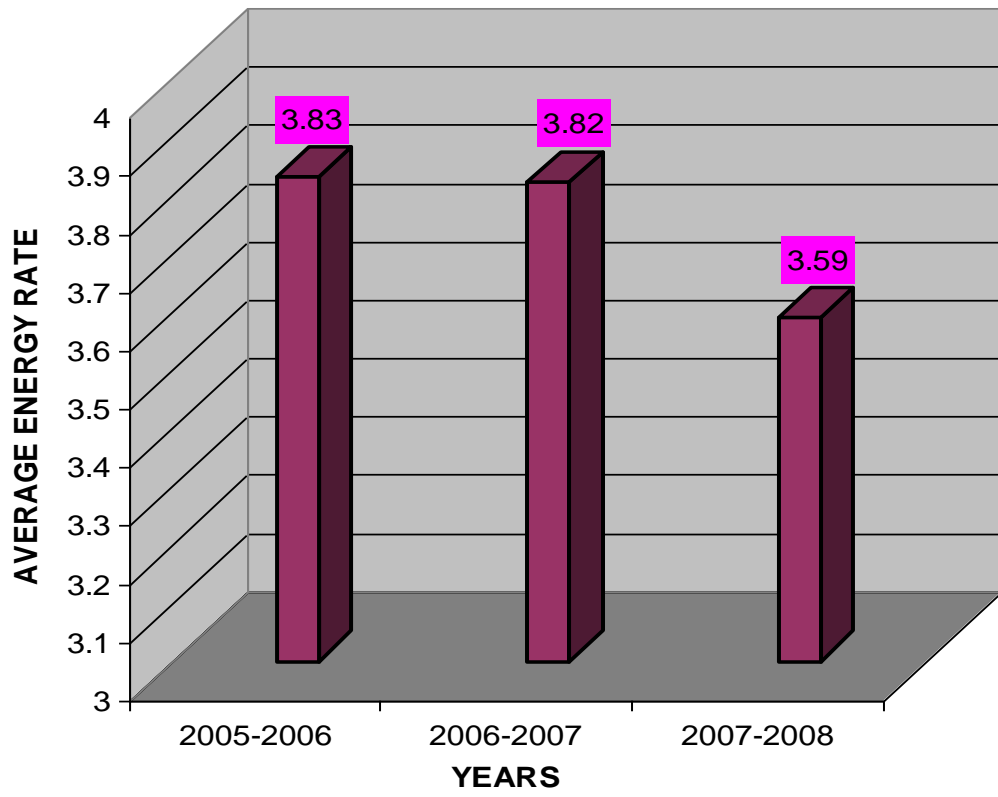
### ACTUAL AVERAGE POWER DEMAND IN KVA



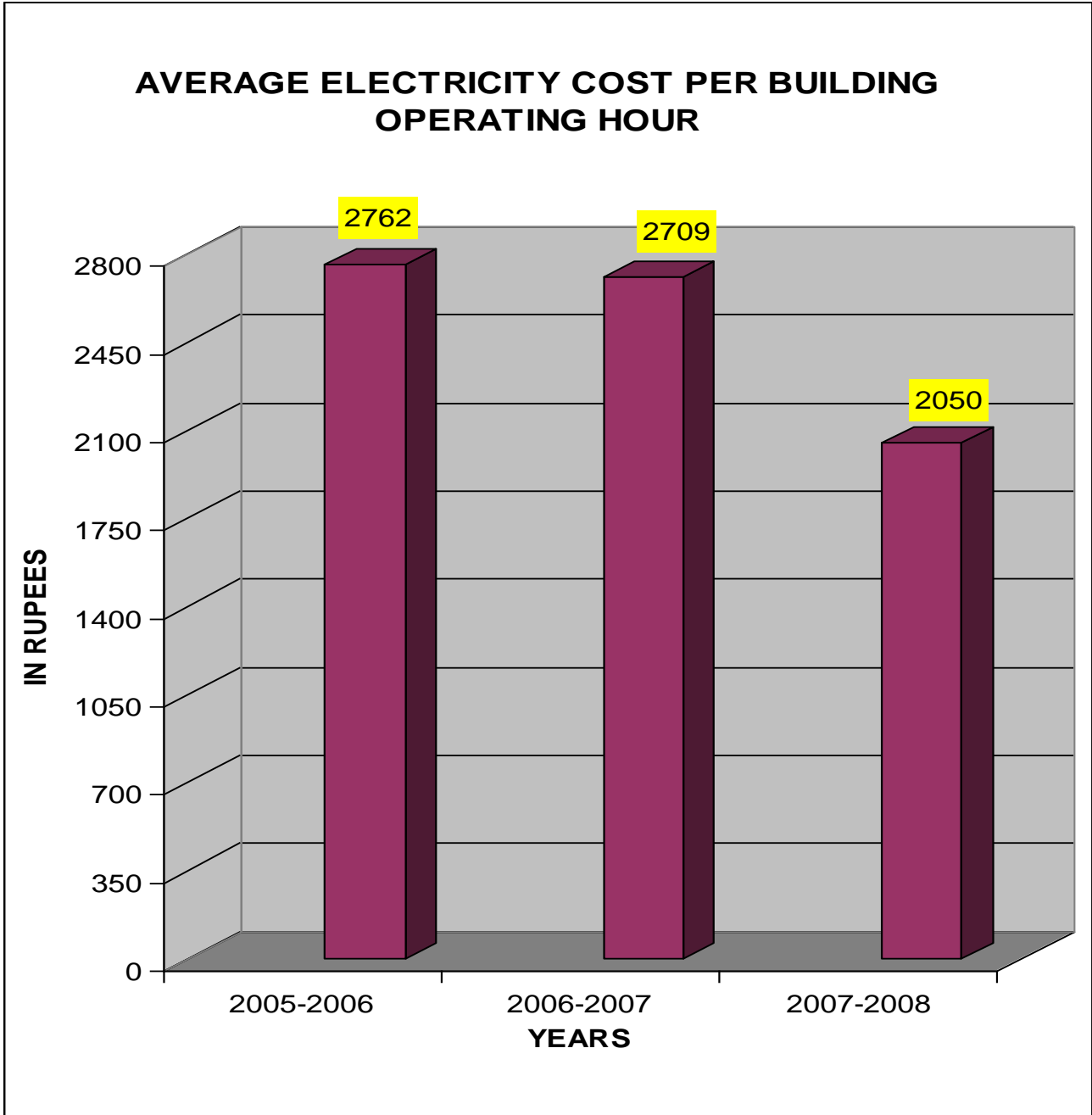
### AVERAGE ENERGY RATE

2005-2006	2006-2007	2007-2008
3.83	3.82	3.59

# AVERAGE ENERGY RATE



AVERAGE ELECTRICITY COST PER BUILDING OPERATING HOUR IN RS.		
2005-2006	2006-2007	2007-2008
2762	2709	2050



**ENERGY CONSERVATION COMMITMENT**

Ramada Caravela Beach Resort is committed to use energy judiciously, efficiently without any adverse effect on environment and society. Towards effective utilization of Energy, we shall endeavor to:

1. Well-trained technical staff to monitor the energy utilization.
2. Use of latest technology with automatic controls, measuring and monitoring system.
3. Old and outdated machineries will be phased out.
4. Regular energy audits will be conducted and all energy legislations will be complied.
5. Systematic energy conservation and Awareness/Training programs will be implemented.
6. Conservation measures not to dilute guest comfort / delight.
7. This policy has been communicated to all employees of Ramada Caravela Beach Resort.
8. Not only does the top management emphasize on achievement of high level of energy efficiency but also provides the financial supports and best energy efficient equipments.

## **IMPLEMENTED MEASURES:**

### **New Distribution Board and energy saving lights in guest rooms:**

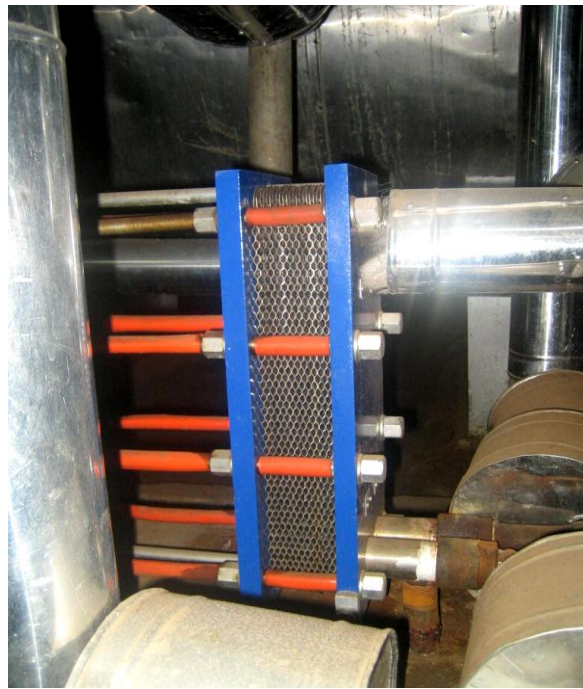
1. Replaced old distribution board with new distribution board of one of guest block. Also old incandescent lights are being changed to energy saving lights.



### **Installation Auto Start Delay Time Switches and Time Switches:**

1. We have connected Auto Start Delay Time Switches in the circuit of Primary Chilled Water Circulation Pumps (3 nos), Cooling Water Circulation Pumps (4 nos), Cooling Tower Fans (5 nos), Exhausts of North Wing (2 nos), South Wing (2 nos), Main Kitchen (2 nos), Laundry (2 nos), Fresh Air Blowers of Kitchen and Laundry, AHU of Health Club and Executive Office and Hot Water Circulation Pumps (3 nos), Ice Cube Machine, Water Coolers of Staff Cafeteria and Kitchen.

### **Installation of Heat Exchanger in Hot Water Line and Steam Condensate line:**



1. We have connected heat exchanger in the condensate return line and hot water return line. Thus the temperature of condensate is being reduced from 90 deg. C to 65 deg. C and that of hot water in return line is being increased from 48 deg. C to 55 deg. C. this helped us to reduce the fuel consumption of Steam Boiler and Hot Water Generator as well. Boiler running hours has been reduced in spite of additional steam load on Laundry machines.

## Installation of Hydropneumatic variable frequency drive system:



1. The hydropneumatic system before was very old and consuming lot of power. The same has been replaced with an imported VFD system from Grundfoss Denmark. With this measure we provide water in guest rooms with constant pressure and our energy consumption has come down. The original system of 45 hp load has been replaced with 21.32 hp.



### **Energy Conservation Plans and Targets:**

1. Installation of Building Management System in order to integrate our air conditioning system, pumping system and cooling towers with load side demand.
2. To replace old FCU's with energy efficient one.
3. To replace lighting with Energy efficient low heat emitting lamps.
4. To replace water taps with sensor type water saving taps.
5. To replace old cooling water pumps with new energy efficient pumps.
6. Replacing old Dough Kneader with new one.
7. Replacing old Bread Slicer with new one.
8. Renovating balance guest rooms.

## Environment, Health and Safety:

Type of waste	Quantity in 2007	Mode Of disposal
Used Pavers	15000 nos	Used for constructing road
Debris	200 tons	Used for land filling

### Solid Waste Utilization



Used pavers utilized for construction of road



Debris utilized for filling land

## Hazardous Waste Statement

**Hazardous Waste: (As specified under hazardous waste management and handling rules - 1989)**

Category waste	Type of 2007	Quantity in
5.1	Used Oil	600 Kg
34.3	S.T.P Sludge	300 Kg

## Solid Waste Statement

Type of waste	Quantity in 2007	Mode Of Disposal
Garbage ( Food Waste)	App. 33000 kg	Given to piggery
Paper waste (News & stationary)	App. 375 kg	Given to scrap Dealer
Plastic Waste (Disposable Carry bags)	App. 1350 kg	Given to scrap Dealer
Glass & China Ware	App. 725 kg	Given to scrap Dealer

## Solid Waste Statement

<b>Type of waste</b>	<b>Quantity in 2007</b>	<b>Mode Of Disposal</b>
Used Pavers	15000 nos	Used for constructing road
Debris	200 tons	Used for land filling