



CENTRAL HOSPITAL N.W. RAILWAY JAIPUR

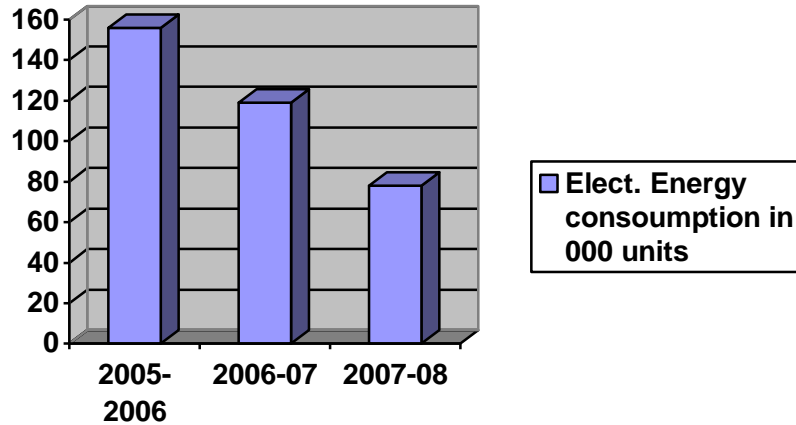


1. BUILDING PROFILE

Railway Hospital Jaipur was founded in the year 1970 for Medical treatment & Health benefit of Rly. Staff as well as private personals. This Hospital has been reformed and converted into Central hospital in the year 2002 from the formation of North Western Railway. Since the Headquarter of NW Railway is situated at Jaipur, therefore, there was need for provision of central hospital for treatment of staff over the zone. The Central hospital is situated in prime location of the Jaipur near railway station Jaipur. The hospital was design for 350 beds. The building of Central Hospital is well illuminated and surrounded with garden & lush green area to make pollution free environment.

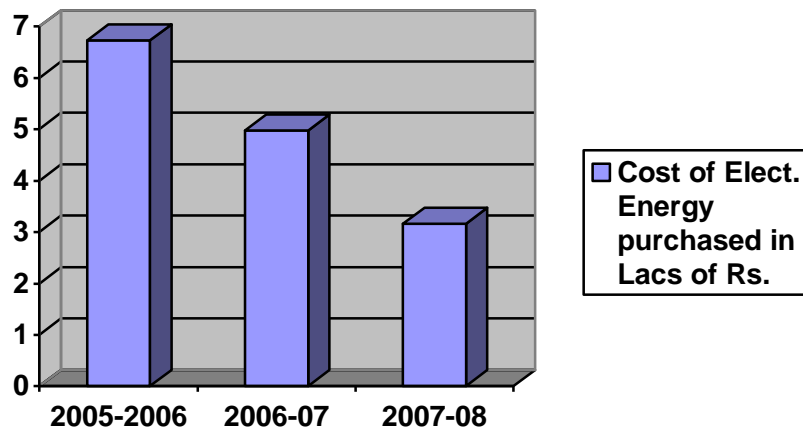
2. ENERGY CONSUMPTION

The source of Electrical energy for hospital is 11 kV supply received from Jaipur Vidhyut Vitaran Nigam Limited at Railway sub-station situated in zonal headquarter building. The energy bill for year 2007-08 was Rs. 3.16 Lacs. The connected load is 302 kW. The electrical consumption for last three years is as under:-



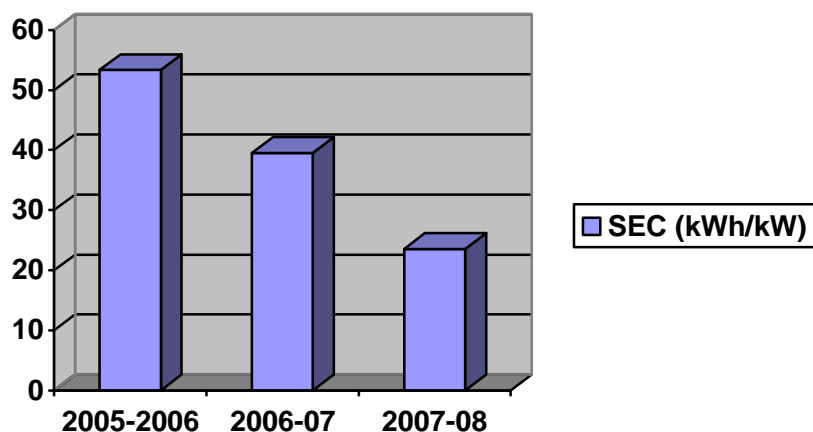
Electrical Consumption				
Energy used	Units	2005 - 06	2006 - 07	2007 - 08
Electricity Purchased	000 kWh	155.688	118.982	78.042
Self generated	000 kWh	0	0	0
Sub-Total	000 kWh	155.688	118.982	78.042

The cost of electricity purchased during last three years is shown as under :-



Cost of Electrical Energy Purchased				
Energy purchased	Rs.	2005 - 06	2006 - 07	2007 - 08
Electricity Purchased	Lacs of Rs.	6.725	4.973	3.16
Self generated	Lacs of Rs.	0	0	0
Sub-Total	Lacs of Rs.	6.725	4.973	3.16

Specific Electrical Consumption (SEC) in kWh / kW for last 3 year is follow:



Year	2005 - 06	2006 - 07	2007 - 08
SEC kWh/kW/month	53.33	39.5	23.58

3. ENERGY CONSERVATION COMMITMENT, POLICY AND SETUP

Railway Organization of Energy Efficiency and Renewable Energy (RE) Management Group on this Railway, monitor the energy consumption intensively. Electrical staff has been regularly counseled about energy conservation & its importance.

3.1 ENERGY MANAGEMENT POLICY

- Adopt Cleaner and Eco - friendly Renewable Energy (RE) sources on Railways.
- Striving to reduce specific energy consumption (SEC & SFC) by continuously taking energy efficiency improvement measures & minimizing energy wastages.
- Incorporate energy efficient designs and technology in all future projects complying with Energy Conservation Building Code, 2007.
- To carry out internal and external Energy Audits on regular basis to identify areas for improvement.
- Involvement of employees at all levels in the energy conservation efforts.
- Extensive use of 3 star (★★★) and above labeled electrical products/equipments.
- Implementation of Energy Conservation Act, 2001 by involving all stake holders.
- Extensive use of LED based lighting products.

3.2 ENERGY CONSERVATION METHODS IMPLEMENTED:

3.2.1 Use of energy efficient fittings :

- (i) In the years 2004-05 & 2005-06 energy conservation measures like provision of CFL fitting replacing incandescent lamp in toilets and galleries, replacement of conventional choke/ballast by electronic ballast, replacement of resistance type regulator with electronic regulator, electronic tube light fittings.
- (ii) In year 2006-07, 380 nos. energy efficient T-5 tube light 1x28W, 2x28W fitting, were provided replacing T8/T12 36W/40W tube lights.



T-5 tube light 1x28W fitting



T-5 tube light 2x28W fitting

3.2.2 Use of Renewable energy sources

- (i) Solar Water Heaters of capacity 1000 LPD & 500 LPD were provided to fulfill the requirement of hot water in hospital.



- (ii) Two solar lights having 11W CFL with solar panel have been provided in the circulating area of central hospital during 2007-08.



3.2.3 Other measures:

- (i) Railway Sub-station feeding Electrical supply to Hospital is certified ISO - 9001 - 2000.



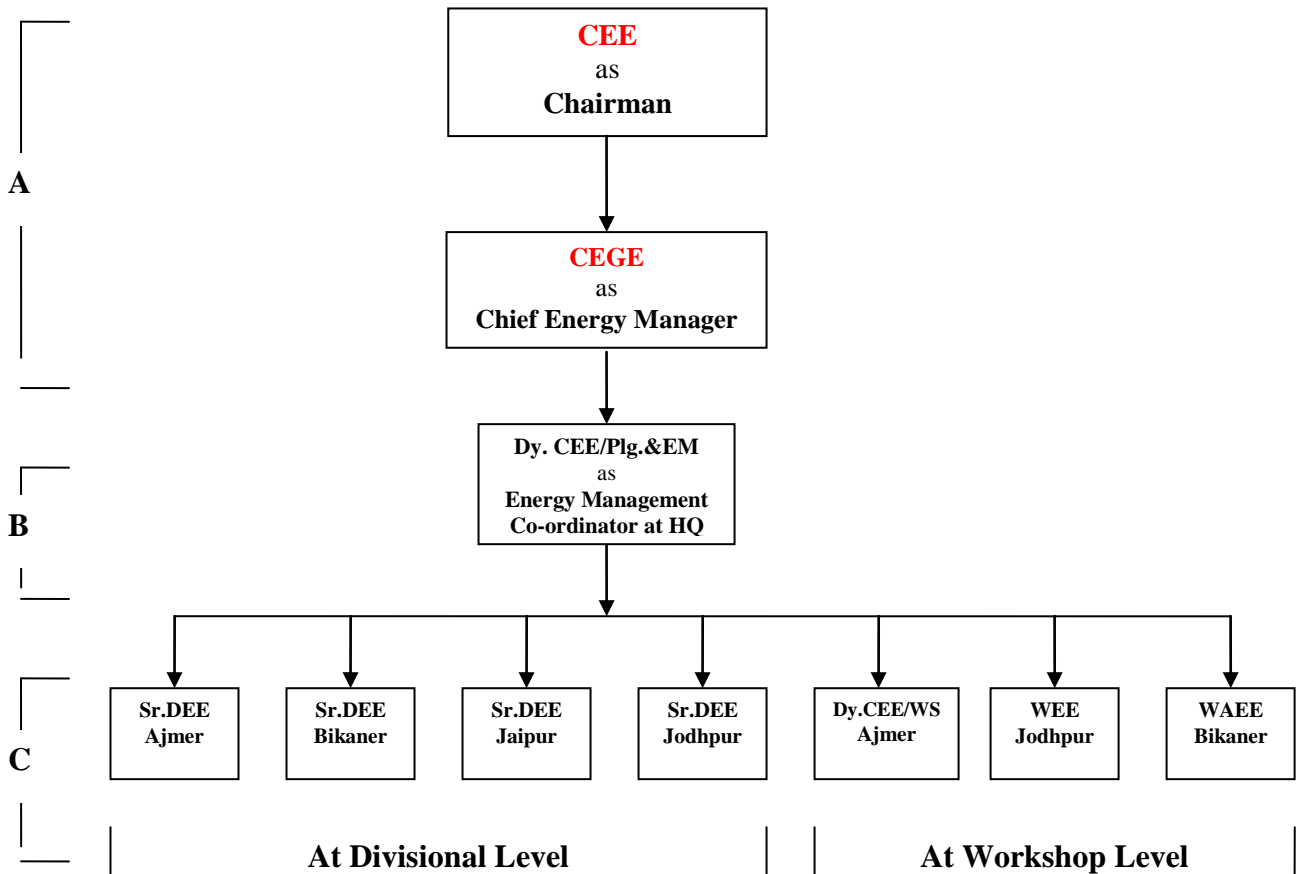
- (ii) APFC panel of 1x33KVAR provided to maintain power factor 0.99 to avail power factor rebate from DISCOM & to improve efficiency of the system.



- (iii) 3kW cap. Sterilizer has been purchased & is being used by regulating use of 18 kW Sterilizer as per actual requirement.

4.0 ORGANIZATION OF ENERGY EFFICIENCY AND RENEWABLE ENERGY (RE) MANAGEMENT GROUP:

The set up of Energy Efficiency & Renewable Energy Management Group is as:



A – Top Level Management
B – Middle Level Management
C – Field Level Management