



ITI Limited ,Mankapur, Gonda(UP)

COMPANY PROFILE

OUR MISSION

To establish leadership in manufacturing and supply of new technology telecom products and also to retain status of top turnkey solution provider.

ITI TODAY

With state-of-the-art manufacturing facilities spread across six locations and a countrywide network of marketing/service outlets, the Company offers a complete range of telecom products and total solutions covering the whole spectrum of Switching, Transmission, Access and Subscriber Premises equipment. In tune with the technology trend, it has embarked on manufacture of mobile infrastructure equipment based on GSM (Global System for Mobile) technology.

ITI Limited is India's pioneering venture in the field of telecommunications. Established in 1948, this premier PSU has contributed to 50% of the present national telecom network.

INFRASTRUCTURE & FACILITIES

PHYSICAL SETUP

- Inhouse R & D
- Network System Unit capable of undertaking turnkey jobs
- Self contained component evaluation centre
- Fully automated assembly lines
- In circuit tester (ICT)
- PCB manufacturing facilities
- Modern Chemical, Metallurgical Labs
- Mechanical fabrication/Machine shops with modern CNC machines
- Moulding & Die casting

- Full fledged state of the art tool rooms
- SMT (Surface mount technology)
- Environmental testing
- Component approval center approved by Department of Telecommunications.
- ISO 9000 compliant Quality Management Systems

TYPICAL VOLUMES OF PRODUCTION

SWITCHING

- Large Digital Switches -2.5 Mn Lines.
- Small and Medium Switches -1.2 Mn Lines

TRANSMISSION

- Digital Microwave Systems -2500 TRS
- Optical Fibre Systems -2200 NOS

TELEPHONES

- 1.2 Mn

RESEARCH and DEVELOPMENT

ITI's technological strength lies in its vibrant R&D Unit. Products developed by R&D forms a major portion of the company's turnover. The resources include:

- **An exclusive core R&D** manned by highly qualified and talented engineers with ISO 9001 certification and representation in national and international level quality standard panels
- **State- of -the- art design aids**
 - Modern facilities for complete equipment and system evaluation
 - Comprehensive vendor evaluation facilities

- Approval and qualification facilities to match international standards.
- Customised Telecom and IT solution expertise.
- Expertise in adapting imported technology/products to the country's requirement.

UNIT PROFILE:

Established in 1983 for the manufacture of large digital switches (E10B). This Plant has modern vertically integrated infrastructure for manufacturing. The OCB 283 / CSN exchange in technical collaboration with Alcatel is manufactured in this Plant. C-Dot (Max-L/Max-XL) exchange is also manufactured by this unit by innovative technology to established the communication network mostly suited for Indian environment.

ITI further joined the league of world class vendors of GSM technology with the inauguration of mobile equipment manufacturing facilities at its Mankapur Plant, which opened a new era of indigenous mobile equipment production in the country. These two lines will augment the capacity to more than nine million lines for catering to both domestic as well as export markets.

Facilities include:

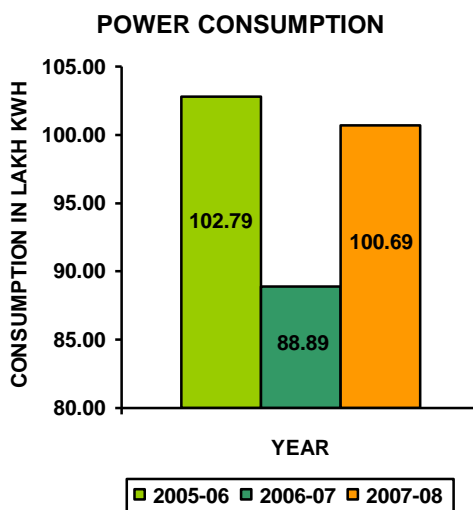
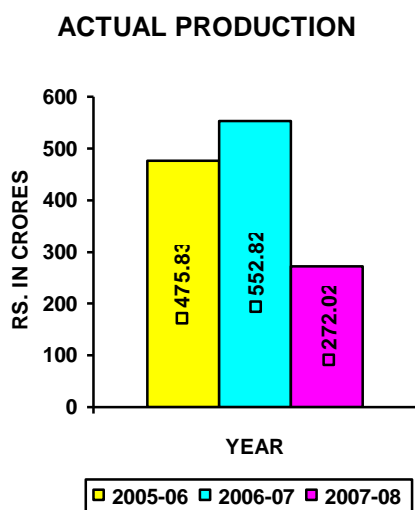
- Research and Development Centre
- Thick Film Hybrid manufacturing
- Surface Mount Technology
- Environment Test Lab
- PCB Plant
- PCB Assembly and Testing
- Metal parts manufacturing
- Finishing Shop
- Moulding & Tool Room
- Connectors and MDF's manufacturing

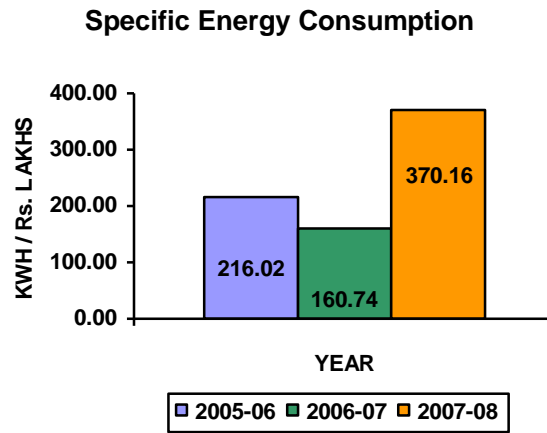
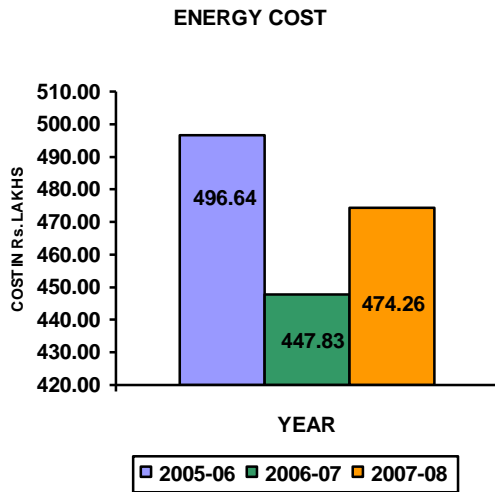
ENERGY CONSUMPTION:

The unit is well aware of energy efficiency & its benefits, which not only provides a highly cost effective and environmentally benign solution to meet energy demand, but also help in reduction of power cost. The Unit has accorded priority for reduction in energy consumption by putting consistent efforts towards monitoring of production / non-production operations / activities as well as company assets management. The details depicts continual energy consumption over last three years except existing year (i.e.2005-06 to 2007-08) Specific Energy Consumption (KWH/Rs. lakh Production) as below:

Description	2005-06	2006-07	2007-08
Total Power Consumption (Lakh kWh)	102.79	88.86	100.69
Total Energy Cost (Rs. Lakhs)	496.64	447.83	474.26
Actual Production (Rs. Lakhs)	47583.00	55282.00	27202.00
Specific Energy Consumption in (KWH/Rs.Lakh Production)	216.02	160.74	370.16

The generation cost has increased due to steep rise in fuel/lub.oil cost and enhancement of imported spare of 05X1450KVA'Yanmar- Toyo Denki' make captive power plant. Though there is not considerable saving in consumption over last year but we have achieved saving in respect of last year in spite of capacity addition & extended working hours of factory to meet the production Plan.





Energy Conservation Commitment, Policy and Set Up:

Commitment:

- ☞ The Unit is committed to promotion of energy efficiency and to reduce the need to create new capacities which require mobilization of huge resources.
- ☞ To intensify the in-house efforts for improving energy efficiency, Energy Conservation Cell and Core Committee have been set up by the Management.

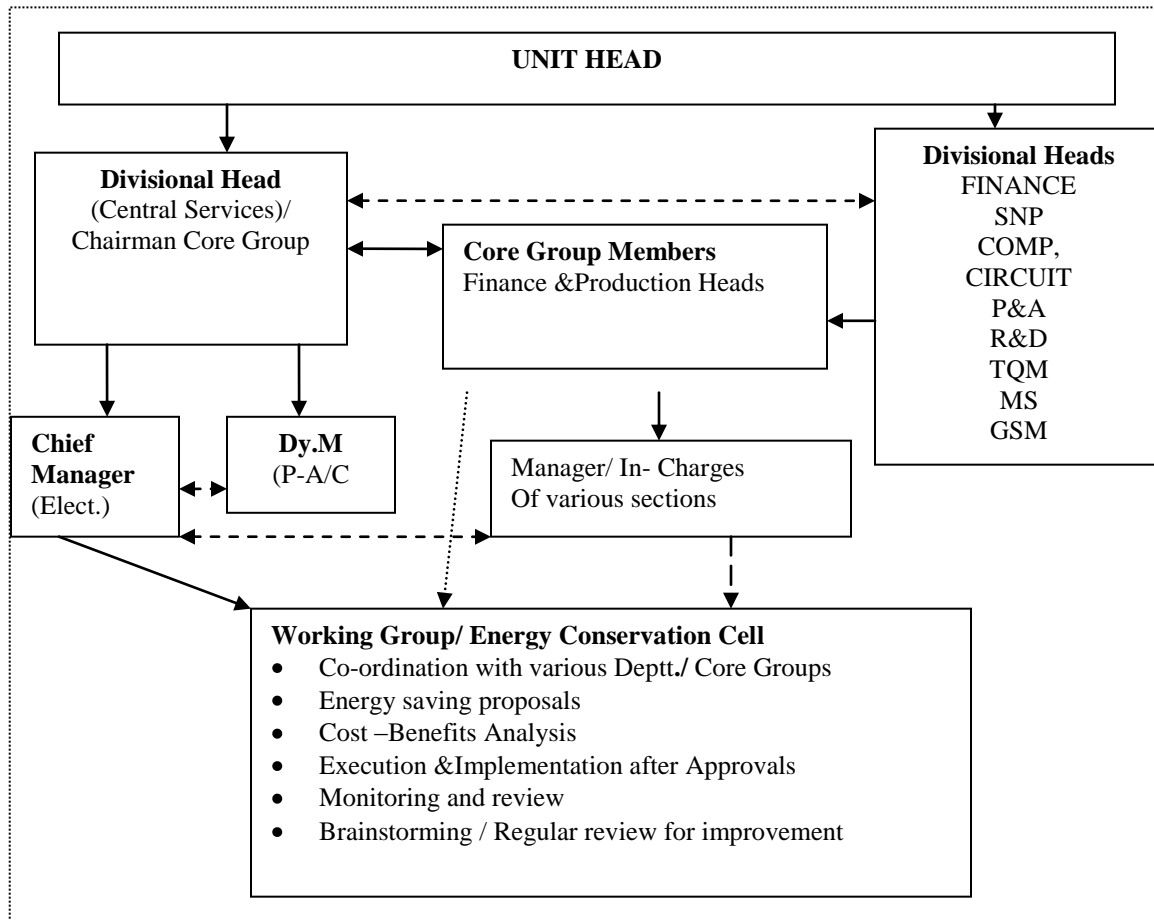
ENERGY CONSERVATION POLICY

We, at ITI Limited Mankapur Unit are committed to adopt energy conservation measures in all our activities, products and services across the unit.

Our Mission is:

- ☐ **To control energy consumption by adopting best practices and energy efficient processes.**
- ☐ **To control energy consumption by producing energy efficient products.**
- ☐ **To conduct regular management reviews to ensure continual improvement.**
- ☐ **To conduct energy conservation awareness programs throughout the unit.**
- ☐ **To recognize efforts of our employees and their families in energy conservation initiatives.**
- ☐ **To ensure energy consumption reduction by 05% each year.**

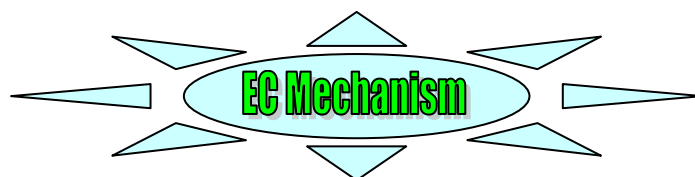
ENERGY CONSERVATION STRUCTURE:



National Energy Conservation Campaign_2005, 2006 &2007:

The Unit was successfully participated in National Campaign on Energy Conservation from 2005 to 2007. The token photographs are given below. In addition to this the Unit planted more than 3000 plants of Jatropha-Curcas' in the factory and Township area.





* **Monitoring and targeting** is the key to energy conservation on daily basis.

* **Norms** are set up on the best performance and practices in past three years.

* **Process Modifications** are focused to conserve the environment, economy and energy & use of non- hazardous chemical.

* **Small Group Activities** are conducted in –house for CAPA (corrective and preventive action) on the basis of planned and actual performance.

* **Brainstorming** – To promote the innovative ideas from brainstorming sessions of various groups.

* **Volunteers participation schemes** from all individuals, suggestions are invited for improvement in a constructive structured manner.

* **Six –Sigma Approach** is adopted to maintain the improvement techniques.

* **Create awareness** among employees and their families by conducting programs on the eve of National Energy Conservation Day.