

Unit Profile

JK Tyre & Industry Ltd. (Formerly known as JK Industries Limited), is the flagship company under the umbrella of JK Organization.

The Principal business of JK organization include Tyre, Paper, Cement, drugs, Agri-Genetics, Dairy & Food Products, Sugar, Cosmetics, Woolen Textiles, Steel, Engineering Files, International Trading, Hybrid Seeds, Industrial Rubber Products, Material Handling System etc.

Operations: JK Tyre was set up as a division of JK Industries Ltd. with manufacturing facility at Jaykaygram (Kankroli) near Udaipur, Rajasthan. This plant was set up in 1975 in Technical Collaboration with General Tire International Corporation of U.S.A. A second Tyre Plant was set up at Banmore, near Gwalior (M.P) in 1991. In 1997, JK Ind. Limited entered into Strategic Alliance with Vikrant Tyre Ltd., Mysore, (A Govt. of Karnataka undertaking), to improve its performance. Subsequently VTL merged with JK Industries Ltd. in 2002.

Organizational Environment - Product and Services

JK Tyre manufactures entire range of tyres for all four-wheeler vehicles being manufactured in India. JK tyre have pioneered Radial tyre technology in India in 1977 and still has largest market share. JK tyre has largest share of business with Maruti and Tata Motors, the largest vehicle manufacturers in India.

JK Tyre also provides compete range of technical services for Tyre care and warranty claims.

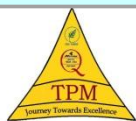


Kankroli Tyre Plant .



*Beyond Business : **SOCIAL COMMITMENT** to the society has been the philosophy of JK Organization, which has been carried forward from the Founding fathers. Various institutions set up by the group throughout India in diverse fields of social welfare stand testimony to this philosophy Fig. O.1.*

Health Care	Education	Auditorium & Sports
<ul style="list-style-type: none"> • Pushpawati Singhania Research Institute for Liver, Renal and Digestive Diseases, New Delhi • JK Institute of Radiology & Cancer Research, Kanpur • Lakshmipat Singhania Institute of Cardiology, Kanpur • Sunitidevi Singhania Hospital & Medical Research Center, Bombay • Jaykaylon Women's Hospital, Kota • Mother & Child Health Institute, Jaipur • Kailashpat Singhania Institute of Medicines, Kanpur • Lala Kamlat Memorial Hospital, Kanpur 	<ul style="list-style-type: none"> • Lakshmipat Singhania Academy, Calcutta • JK Institute of Applied Physics & Technology, Allahabad • JK Institute of Sociology & Human Relations, Lucknow, attached to the Lucknow University. • Lakshmipat Singhania Public School, Jaykaypur, Orissa. • Sulochana Devi Singhania Higher Secondary School, Thane. • Sir Padampati Singhania Education Center, Kanpur • Vrindaban Bal Niketan, Sripatnagar, Udaipur • Lakshmipat Singhania School, Jaykaygram, Kankroli, Rajasthan. 	<ul style="list-style-type: none"> • Lakshmipat Singhania Auditorium at PHD Chamber of Commerce and Industry, New Delhi. • Auditorium for Children Welfare Club at Calcutta • J.K. Sports Foundation. • Promotion & Sponsorship of
	<p style="text-align: center;">Charitable Institutes</p>	<p style="text-align: center;">Temples</p>
	<ul style="list-style-type: none"> • JK Trust, Calcutta • Lakshmipat Singhania Educational Foundation, New Delhi • Lakshmipat Singhania Medical Foundation, New Delhi 	<ul style="list-style-type: none"> • Sri Radhakrishna Temple, Kanpur • Sri Dwarkadhish Temple, Kanpur • Sri Kamleshwar Temple, Kanpur • Lakshmi Narayan Temple, Jaykaypuram, Sirohi • Sita Ram Temple, Sripatnagar, Udaipur • Temples at Vrindaban <ul style="list-style-type: none"> • Raghukuleswar Temple, Jaykaygram, Kankroli

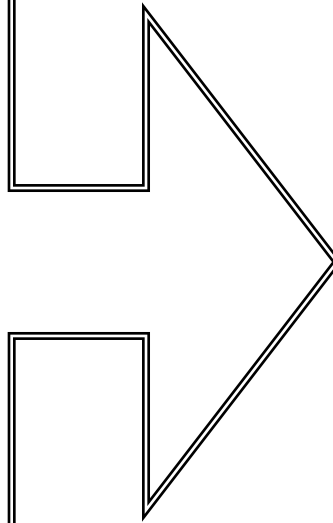


Kankroli Tyre Plant .



Manufacturing Process

1. Mixing
2. Dipping
3. Calendaring
4. Tread Extrusion
5. SW Extrusion
6. Bead Preparation
7. Ply Cutting
8. Sq. Application
9. Assembling
10. Jamming
11. Painting
12. Curing
13. Finishing
14. Inspection



Kankroli Tyre Plant .



Energy Management Policy

We at J.K.Tyres are Committed to Conserve Natural Resources & Energy by

- Enhancing Equipment Efficiency
- Minimizing Waste & idle run
- Technology & Innovation
- Periodic Reviews and Skill Upgradation
- People Involvement

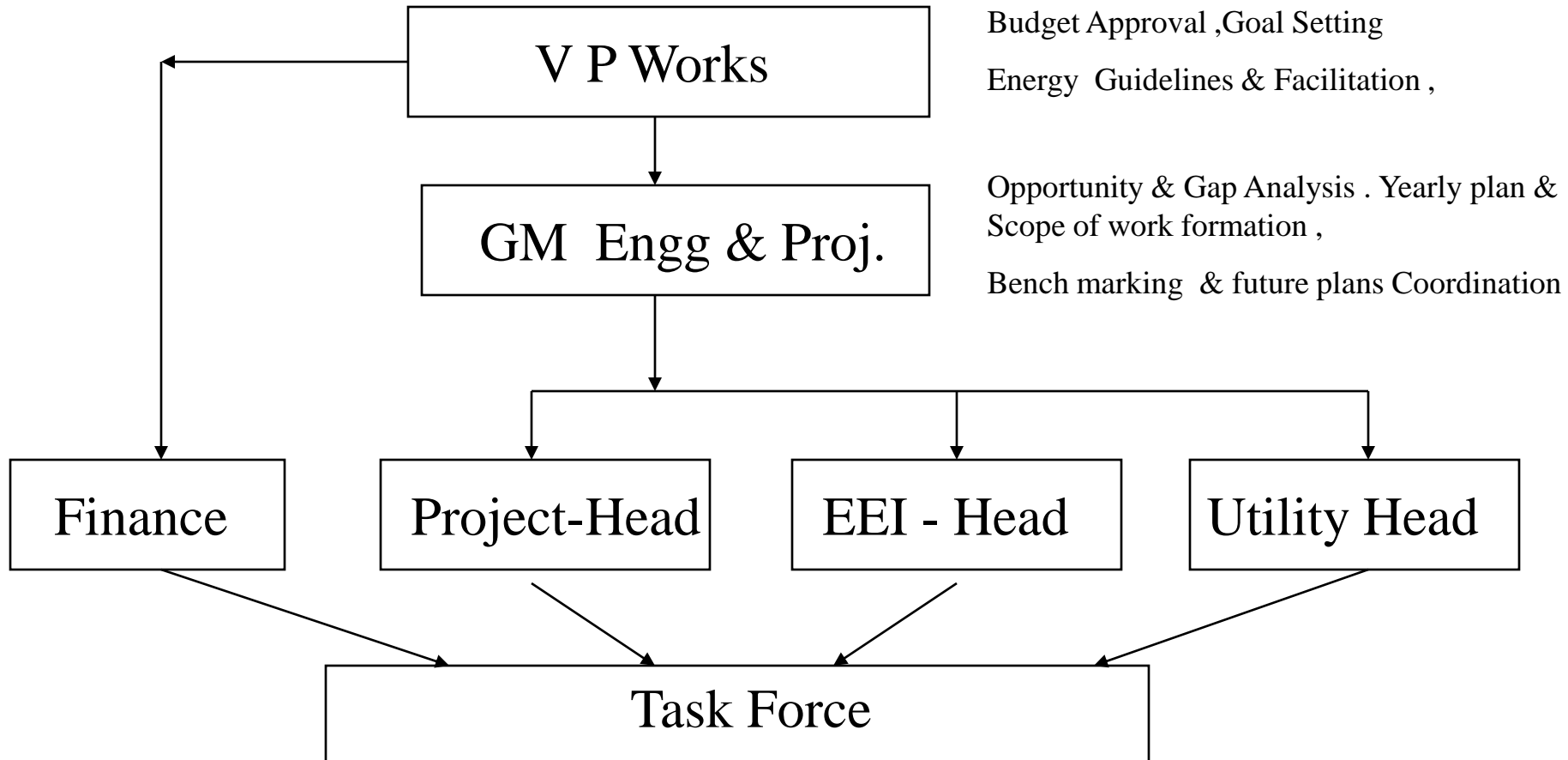
We will continuously Benchmark & Better Energy Performance in our endeavor to be the World's Best Bias Tyre Plant By 2008.



Kankroli Tyre Plant .



Organization Structure



Task force comprises of cross functional team , which conduct brain storming session to identify new opportunities . Check feasible ideas along with top management .Execute best ideas & followed by performance review with VP (Works) . Task force Energy conservation efforts are periodically encouraged by Top management through various motivation techniques



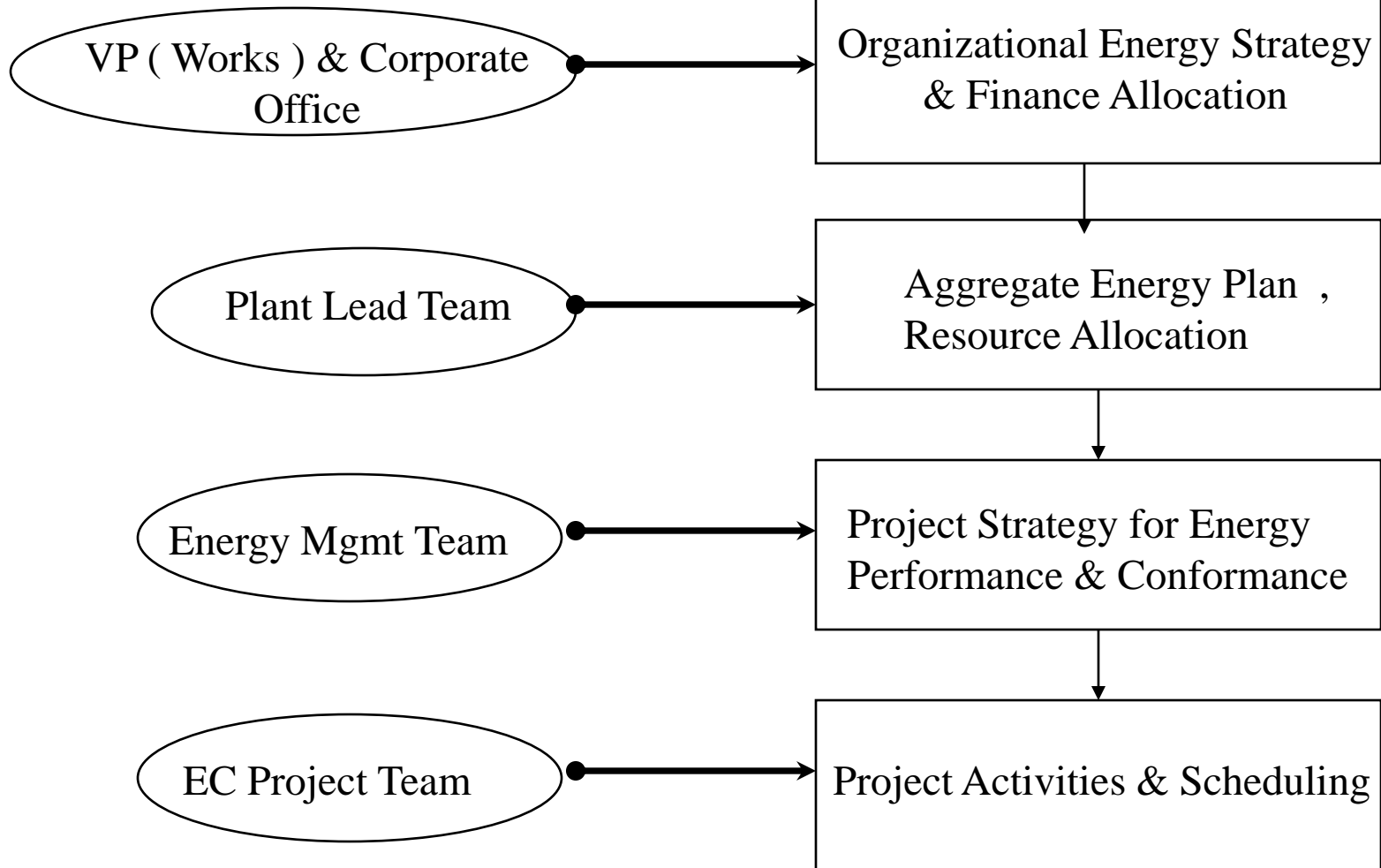
Kankroli Tyre Plant .



Energy Cell Approach

Decision Makers

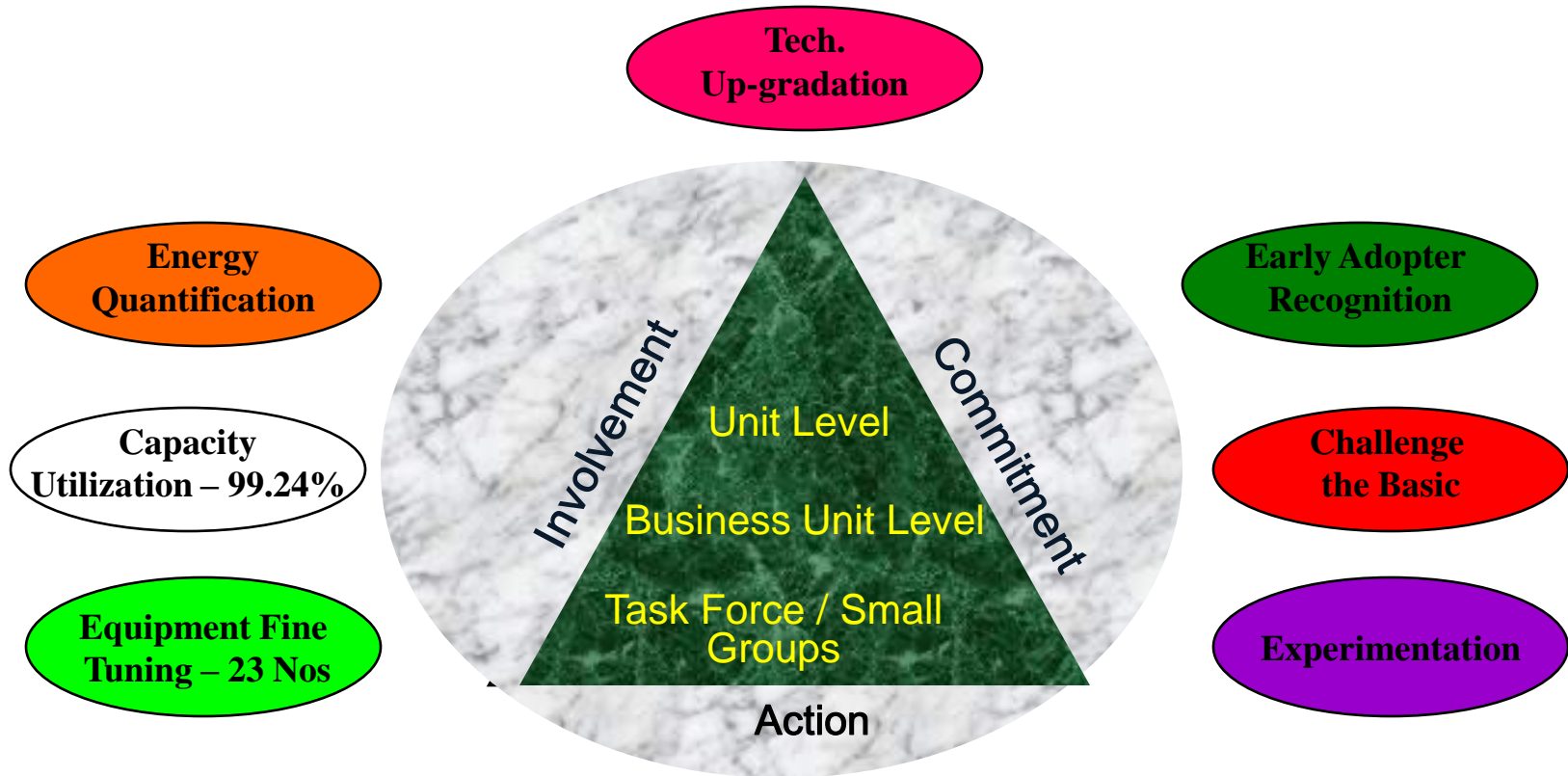
Role & Responsibility



Kankroli Tyre Plant .



Energy Conservation Commitment



Ideas Generated –Nos
Implemented no.



Kankroli Tyre Plant .



Specific Energy Consumption

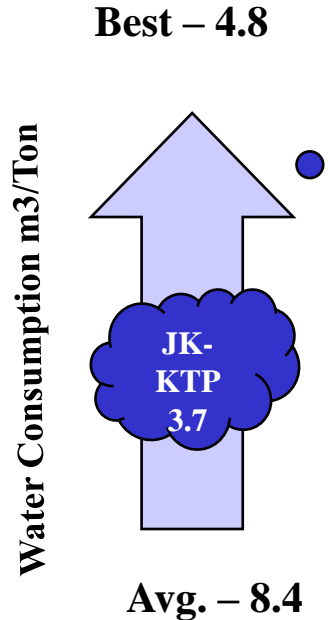
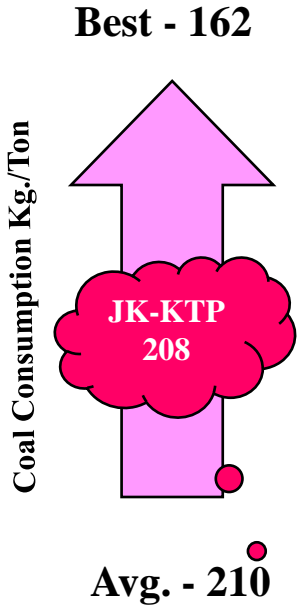
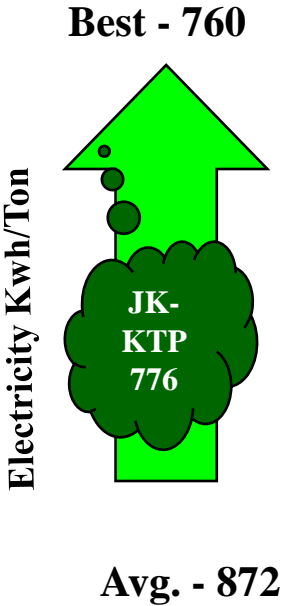
Year	Sp. Energy Consumption	
	*kWh/ tonne	Coal MT / tonne
2005 - 2006	795	0.482
2006 - 2007	776	0.453
2007 - 2008	764	0.423



Kankroli Tyre Plant .



Bench Marking



Data Source CII Study Conducted by Forbes Marshal

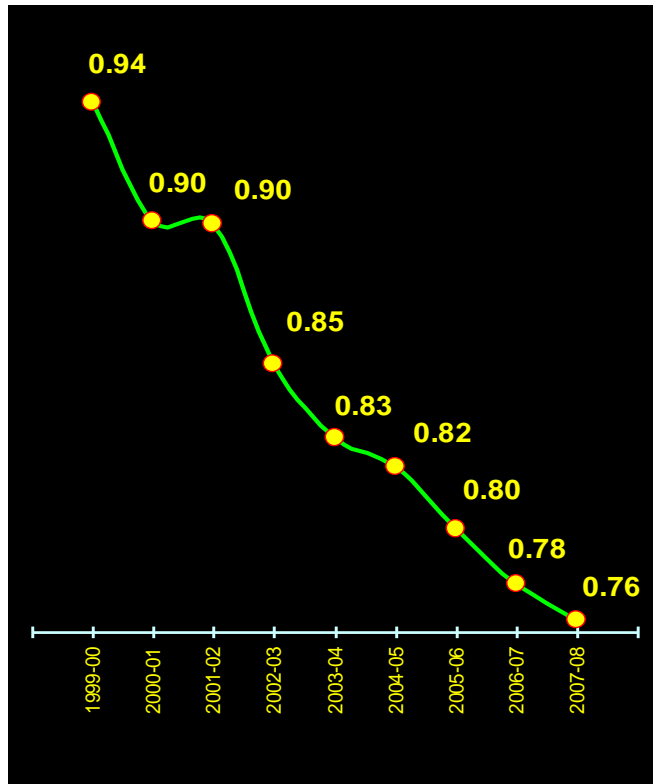


Kankroli Tyre Plant .

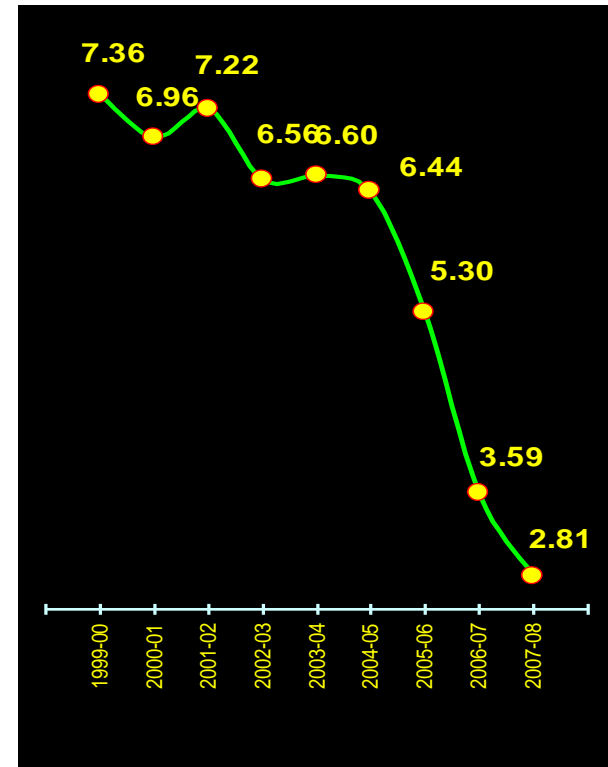


Specific Energy Consumption

**Power Consumption
Kwh./Kg.**



**Water Consumption
Ltrs./Kg.**



Kankroli Tyre Plant .



Project Name :- VFD on DIP UNIT THERMINAL CIRCULATION PUMP



Description:.

Earlier Fuel oil circulation governed in DIP UNIT process by motor which were running by DOL Starter continuously. Now VFD put on that motor & running that on 40HZ while maintaining temperature as per process requirement.

Investment: 0.5 Lacs Rs

Saving: 1.39LacsRs/Anum

Project Name :- CONVERSION OF INLINE PUMP WITH BOOSTER PUMP



Description:.

Earlier There was 50HP Inline pump at Banbury #4 which was used to circulate water in 2000HP motor as per process requirement . Now That particular flow is achieved by installing by simple 5HP booster pump in place of Inline pump

Investment: 0.07 Lacs

Saving: 12.67 LacsRs/Anum



Kankroli Tyre Plant .



Project Name :- CONVERSION OF 250W MERCURY IN TO T-5 TUBELIGHTS IN PASSAGE AREA



Description:.Conversion of 250W Mercury Light fitting in to 28W tubeLight fitting in Plant-III Passage Area.which helps in reduction in power cost.

Investment: 0.38 Lacs Rs

Saving: 3.23 LacsRs/Anum

Project Name :- REMOVAL OF INNER DUST COLLECTOR FROM TUBER

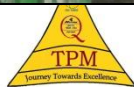


Description:.

Earlier one dust collector blower[10HP]was running on TUBER unit which is used in sucking the air dust from line.Now we stop that Dust collector Motor by slightly modifying the process that Resulted in energy saving equivalent to 10HP motor .

Investment: NIL

Saving: 2.82 lacs Rs/Anum



Kankroli Tyre Plant .



Project Name :- USE OF HIGH SPEED DEISEL IPO FO



Description:.

Earlier FO was used to fire boiler in case of emergency & as its high viscous nature one pump of 7.5 HP was used to circulate the oil around the storage tank with one steam line on the tank to reduce the viscosity of the oil for spraying it. Now both pump

Investment: NIL

Saving: 14.52 Lacs Rs/Anum

Project Name :-CONVERSION OF VERTICAL PUMP IN TO HORIZONTAL

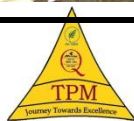


Description:.

Earlier we were using four nos of Cold water Return Pump[Vertical type] which is used to boost the water pr for Cooling Tower. Now we converted three vertical type of 50HP pump in to 30HP Horizontal type out of Four. So hear energy saving is achieved b

Investment: 2 Lacs

Saving: 16.90 Lacs Rs/Anum



Kankroli Tyre Plant .



Project Name :-MP EXT BLOWER INSTALLATION IPO OPEN AIR LINE



Description:.

Earlier One half inch open air line was on MP EXT unit to lift the side wall as per process requirement. This was an open air line in which there was continuous supply of air. Now We installed a simple 5 HP blower unit which was interlocked with line & c

Investment: 0.07Lacs

Saving: 7.72 Lacs Rs/Anum

Project Name :-Conversion of Two Nos of Bias Cutter Drive from Pneumatic to Servo Drive

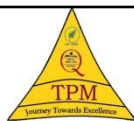


Description : Carriage movement was through 2 mtr long cylinder [Horizontal Deployment.]

New Servo drive incorporated in place of pneumatic cylinder .

Investment 5 lacs

Saving 12.5 lacs



Kankroli Tyre Plant .

