



MLIF AT A GLANCE

❖ UNIT PROFILE:

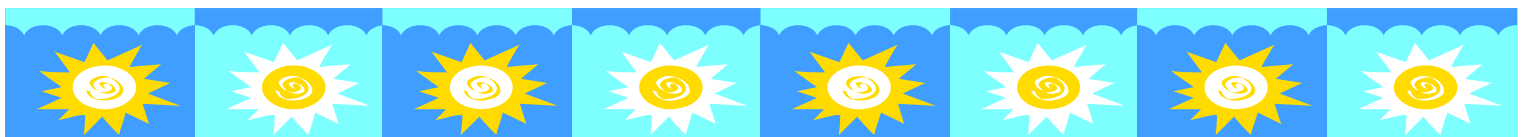
Mangalore LPG Import Facility is one of the pride units of HPCL and was commissioned in *October 1996* with an installed capacity of dispatch of *680000 MT per annum*. MLIF is catering to Domestic and Non Domestic LPG demand of all the Government Oil Companies viz. HPCL, BPCL & IOCL in South India. MLIF is located in Village Bala, near Mangalore, Karnataka in an area of *176 acres*.



Mangalore LPG Import Facility (MLIF) is certified with International Safety Rating System-8 and certified with Integrated Management System (ISO 14001, ISO 9001 & OHSAS 18000). At MLIF, Bulk LPG is imported from Gulf countries or by coastal transshipment from the RPL Refinery of Jamnagar and through pipeline from MRPL refinery Mangalore. LPG is stored in 12 nos. spherical LPG vessels having total bulk storage capacity 16,800 MT which is largest such facility in India. The LPG is then distributed to various locations of Southern India through road tankers and railway wagons and through pipeline to nearby LPG plant. The import facility handles about 1.6 million tones of LPG per annum and caters to the entire south Indian belt comprising the states of Karnataka, Andhra Pradesh, Kerala, Tamilnadu and Goa.

The loading of Tank Trucks are carried out in a fully automated tank truck loading gantry equipped with most modern loading arms with latest safety fittings like Emergency Release Coupling etc. All parameters for loading can be controlled either remotely from the

AN INTEGRATED MANAGEMENT SYSTEM CERTIFIED LPG TERMINAL FOR ISO 9001/14001/OHSAS 18001



MLIF, being a storage and distribution point only, is not a manufacturing unit involved in sales. The revenue for the terminal is generated mainly through charging storage and handling charges for LPG from other marketing companies i.e. IOCL and BPCL, which is termed as “Terminalling Charges”.

❖ **ENERGY CONSUMPTION:**

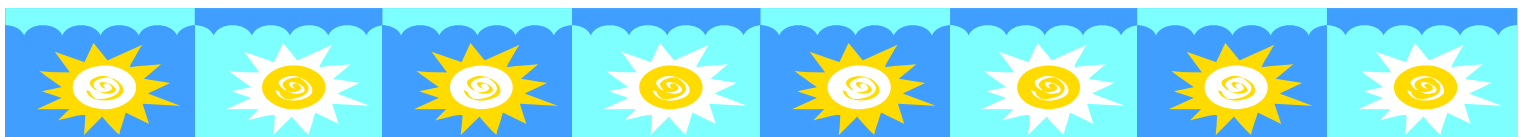
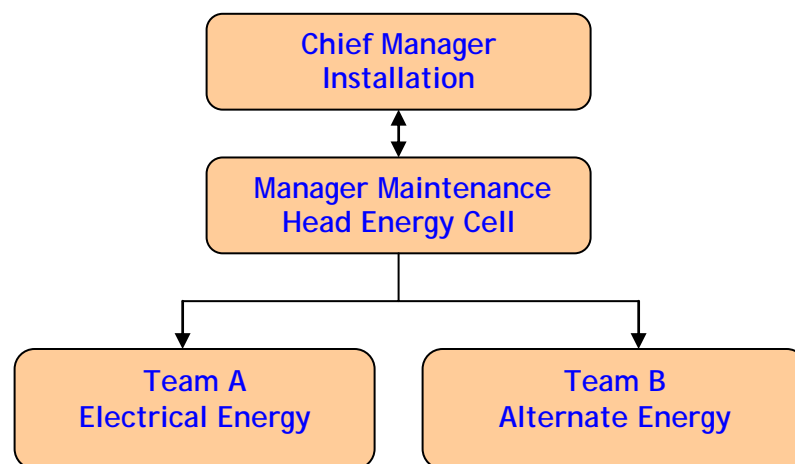
MLIF uses Electrical energy in its operations, for lightening and air conditioning purposes. The energy consumption figures given below shows a declining trend due to our sustained efforts to conserve energy through implementation of various energy saving ideas and continuous monitoring and evaluation of our energy consumptions.

Description	Unit	2005-06	2006-07	2007-08
Specific Energy consumption	Kwh/MT	1.707	1.687	1.678
Total operating Cost	Rs.lakhs	695.274	758.850	852.556
Total Energy cost	Rs. Lakhs	115.788	117.171	128.261
Energy as % of Total operation cost	%	16.65	15.44	15.04

❖ **ENERGY CONSERVATION COMMITMENT, POLICY AND SET-UP:**

As a part of its Energy Conservation efforts, MLIF has been involved in continual improvement of energy utilization and conservation. Committed, Energy Conservation team members are engaged in identifying new areas for improvement and implementing new energy saving schemes. The Energy Conservation Team is headed by Chief Installation Manager through Manager Energy. The team constitutes members from all areas of operations. The team meets periodically for review and implementation of new Energy Saving Schemes.

❖ **ENERGY CONSERVATION TEAM STRUCTURE:**



ENERGY MANAGEMENT POLICY

Mangalore LPG Import Facility is committed to:

- ❖ Create awareness of Energy Conservation among its employees.
- ❖ Control of its energy Consumption through continuous monitoring and inspection.
- ❖ Implementation of Eco Friendly and Unconventional Energy Schemes.
- ❖ Up gradation of processes with energy efficient technologies for minimizing energy cost.

❖ ENERGY CONSERVATION ACHIEVEMENTS:

- ❖ As a part of its Energy Conservation initiatives MLIF is also using Unconventional Energy Sources and has installed 16 nos. Solar Lights for Administration Building and Street lights. Solar Heaters are also being used at Canteen facilities both resulting in a net saving of Rs.1.15 lakhs per annum.

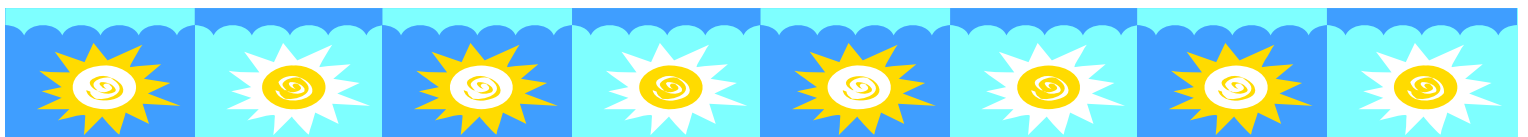


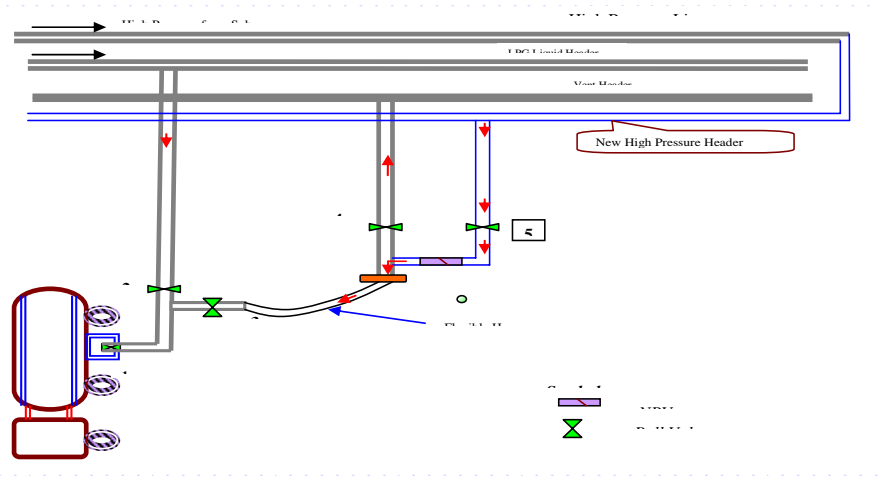
Solar Heater



Solar Light Battery Bank

- ❖ An innovative project for “Residual LPG” saving was done at Tank Truck loading gantry. Earlier, due to operational constraints some amount of LPG trapped in Tanker loading arm used to be vented to atmosphere at Tanker loading gantry. The innovative design modification of LPG vent line resulted in saving of almost 1.298 MT of LPG per day. After implementation of this project huge saving of natural resources (LPG) worth approximately Rs.1.5 crores per annum was achieved.





LPG Recovery Project at TT gantry

- ❖ In our continuous endeavors towards energy saving, we have installed one wind mill on one of our old bore well. The water thus produced is used in canteen facilities without any electric pumping which results in Rs.0.66 lakhs per annum.

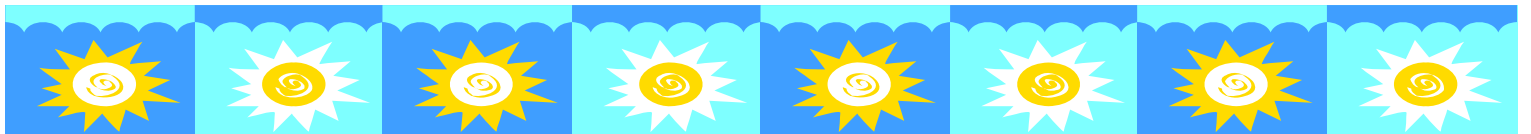


Wind Mill



water Harvesting Project

- ❖ MLIF has installed strategically located water harvesting sites on its buildings from which the rain water is directed to overhead tanks to further utilize it as utility water. Any Overflow of such tanks is directed towards bore wells for charging the ground water. Thus resulting in saving of pumping cost of water.



❖ **ENERGY CONSERVATION PLANS AND TARGETS:**

- ❖ LPG vent line modification project for saving of “Residual LPG” from wagon loading arms to be implemented at Railway Wagon Gantry also. After implementation of this project LPG of approximate worth Rs. 80 lakhs per annum would be saved. Project will be completed by December 2008.
- ❖ Improving the efficiency of all the LPG pumps and air compressors through planned inspection and overhauling.
- ❖ Replacement of High Power Sodium Vapor Lamps on high mast lighting towers to very energy efficient MH lights which will result in energy saving.
- ❖ Improving efficiency of DG sets through regular inspection and overhauling.

❖ **ENVIRONMENT AND SAFETY:**

MLIF is an Integrated Management System (ISO 14001, ISO 9001 & OHSAS 18000) certified installation. At MLIF the safety and environment are given utmost importance and the terminal is fully committed to preserve the environment and safety of all its employees, and the general public at large.

- ❖ In its efforts towards preserving environment, MLIF has installed sufficiently high chimneys for DG set exhausts to avoid pollution of the air environment near the terminal.
- ❖ The MLIF has provided acoustic enclosures for its DG sets and Fire Engines to reduce noise pollution for its employees.
- ❖ Water Effluent treatment plant had been installed for treating water effluents of the terminal. The water after treatment is used for watering the gardens.

