



Siel Chemical Complex, Rajpura

Unit Profile

Siel Chemical Complex (SCC) is one of the leading Chlor- Alkali manufacturer in North India. The products are Caustic Soda (Flakes & Lye), Hydrochloric Acid, Stable Bleaching Power, Sodium Hypochlorite, Hydrogen and Liquid Chlorine. The manufacturing process is based on the environment friendly Membrane Cell Technology. The technology involved consist of fine control of all process parameters with world's most sophisticated Distributed Control System (DCS). Safe operation is an integral part of the DCS.

All the products manufactured, conform to BIS standards. The organization is ISO 9001-2000 certified for the manufacture of Stable Bleaching Powder.



Organization got ISO 14001:2004 Environment Management System Certification from DNV under accreditation of Dutch Council Accreditation (RvA) w.e.f. 3rd June 2006

Energy consumption

By implementing various energy conservation projects there has been a consistent decrease in the specific Electrical consumption

DESCRIPTION	UNITS	2005-06	2006-07	2007-08
Annual production	MT	69362	72732	104422
Total electrical energy consumption/annum	Lakhs kWh	2115.30	2209.35	3177.14
Specific energy consumption-Electrical	kWh/tonne	2626	2597	2641
Total Fuel consumption/annum	KL	4878	5843	7636

S.No.	YEAR	Electricity Consumption (KWH/Tonne)	% reduction over 2005-2006
1.	2005-2006	2626	
2.	2006-2007	2597	1.1%
3.	2007-2008	2641	(0.5%)

Energy Conservation Commitment, policy and set up.

Siel chemical complex considers Energy Saving as a multi disciplinary approach. Plant energy profile consists of Electricity, Furnace oil and Water. Energy conservation plans, policy and structure are reviewed periodically. In house energy conservation seminar, poster and slogan competitions are also conducted every year. Energy Management policy is displaced every where in the plant for creating the energy conservation awareness.

ENERGY MANAGEMENT POLICY

Siel Chemical Complex, Rajpura



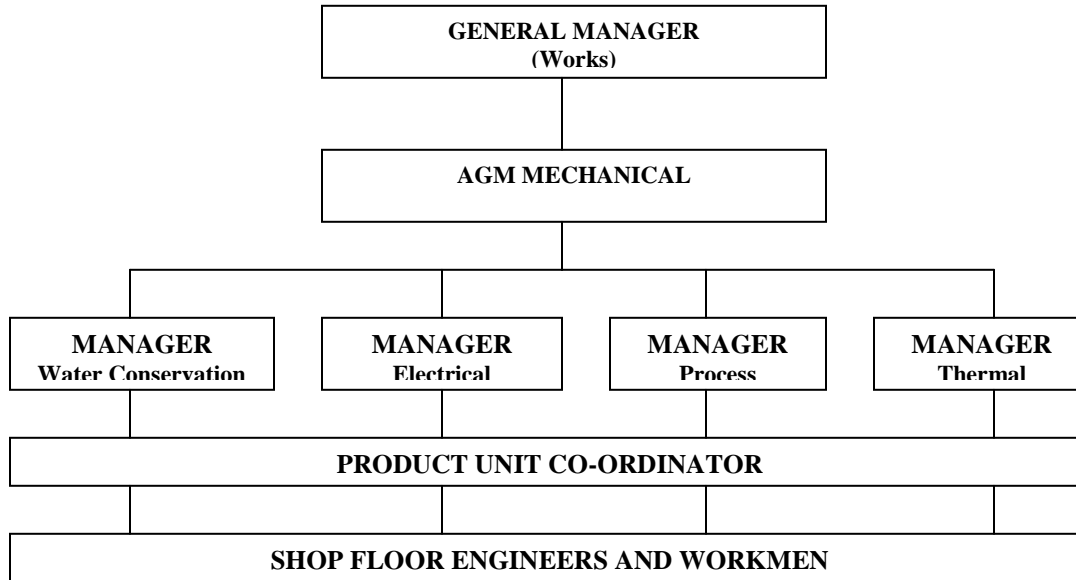
Energy Management Policy

Siel Chemical Complex is committed to Energy Conservation By:

1. Maximizing the Capacity Utilization.
2. Promote Energy saving jobs and maintaining Cell House (Electrolyser & Bus-Bar) efficiency.
3. Promote awareness & Importance of Energy Conservation among all employees through seminars, Competitions.
4. Recognizing suggestions given by employees for continual improvement in Process, Energy Conservation & Efficiency.


General Manager (Works)

ENERGY MANAGEMENT CELL STRUCTURE



Energy Conservation Plans and Targets

	Energy saving jobs to be taken in 2007-2008	Project commencement and completion period	Approx. Investment
S.N.	Description		
1	Replacement of ID fan blades with energy efficient FRP blades of Rectifier house/ Flaking plant / Evaporator house / cell house and SBP plant	2008-09	5.25
2	Speed of the padding air compressors to be reduced	2008-09	0.1
3	Candles of Dry chlorine mist eliminator to be replaced	2008-09	6
4	Cooling tower pumps of chlorine house / HCL plant to be replaced with energy efficient pumps	2008-09	2

5	DM water pump will be replaced with energy efficient pump	2008-09	0.5
6	Replacement of steam strap with better design PC-01 type	2008-09	2.4
9	Replacement of NT Blower Motor with lower size i.e. 15 HP	2008-09	0.3
10	Replacement of Chlorine house C.T ID fan Motor of 50H.P with lower size i.e. 30 HP	2008-09	0.5
11	Replacement of chlorine house Air Compressor Motor of 100H.P with lower size i.e. 75 HP	2008-09	0.5
12	Replacement of chlorine house Chilled Water Pump Motor of 60H.P with lower size i.e. 40 HP	2008-09	0.3
13	Replacement of Rectifier C.T pump motor with lower size motor	2008-09	0.3
14	Replacement of Old A.Cs with new energy efficient A.Cs	2008-09	2.0
15	Replacement of 70 Nos of old ceiling fans with new energy efficient ceiling fans	2008-09	0.84

Others Plans

1. Replacing faulty header traps
2. Moisture separator for Steam Atomizer
3. Attending steam leakages.
4. Attending insulation

Environment & safety

Siel Chemical Complex has environment and safety departments which maintains the safety standards and ensures that safety measures are being followed strictly.

There is a First-Aid Center in Complex managed by Doctor round the clock. An ambulance is also readily available to shift the patients in case of emergency.

Siel Chemical Complex has made significant efforts in creating green environment by adopting clean technology; clean working practices and development of greenbelt in and around the factory. It constantly organizes functions to create awareness amongst the school children, local public and community at large regarding the importance of protecting the environment and the company's endeavor towards the same. PPCB and

public have recognized SCC's effort for protection of the environment and awarded in various public functions.

Further to strengthen its commitment to safeguard the environment, the organization has adopted the latest Environmental Management System (ISO 14001:2004) to meet the requirements of the environment concerned customers and agents.

