

# Gujarat Cement Works





## *OUR VISION*

To be a premium global conglomerate with a clear focus on each business.

## *OUR MISSION*

To deliver superior value to our customers, shareholders, employees and society at large.

## *OUR VALUES*

Integrity, Commitment, Passion, Seamlessness and Speed

Kumar Mangalam Birla  
Chairman, The Aditya Birla Group



# Gujarat Cement Works

## Quality, Environment and Occupational Health & Safety Policy

### **We are committed to**

- manufacture clinker & cement of consistent quality for national & international market.
- prevention of pollution.
- minimize OHS risks.

### **We are committed to**

- conservation of natural resources such as high grade lime stone, water & fuel.
- minimize the manufacturing cost, air pollution, lost time accidents, long term respiratory & other health hazards.

### **We are committed to**

- provide motivating and harmonious work environment for development of employees to achieve the organisational goals.
- communicate to our employees and other concerned on QES aspects for their active & total involvement.

### **We are committed to**

- customer satisfaction.
- total compliance with the applicable legislation & other requirements.
- continual improvement of effectiveness of QES.

**K.Y.P. KULKARNI**  
**(Unit Head)**  
**Head of Management**

# UltraTech Cement Limited

## Gujarat cement Works

### Energy Policy

We are committed to continually reduce specific energy consumption by :

- adopting latest technology for process & process equipments
- On line monitoring & controlling of energy parameters on continuous basis
- Encouraging employees for their valuable suggestions on Energy Conservation
- Conducting training and awareness programmes
- Fostering the habit of using Energy economically & efficiently

K.Y.P. Kulkarni  
Sr. Executive President

## BRIEF WRITEUP

### (i) UNIT PROFILE

**UltraTech Cement Limited**, Gujarat Cement Works first unit was commissioned in 1996. In the year 1998 second plant was commissioned. Gujarat Cement Works with two cement production lines has a total annual manufacturing capacity of 50 Lacs Ton of Clinker and 40.0 Lacs Ton of Cement. It is located in the Amreli District of Saurashtra Region of Gujarat, nearest city & Railway station is .

UltraTech Cement Limited, is a part of **Aditya Birla Group of Companies**. UltraTech is the leading cement major and the most reputed with premium brand in the country, with over 18.6 Million Tonnes installed capacity, incorporating state of art technology, advanced instrumentation systems, computerized control, on line quality control by XRF & Computerised control.

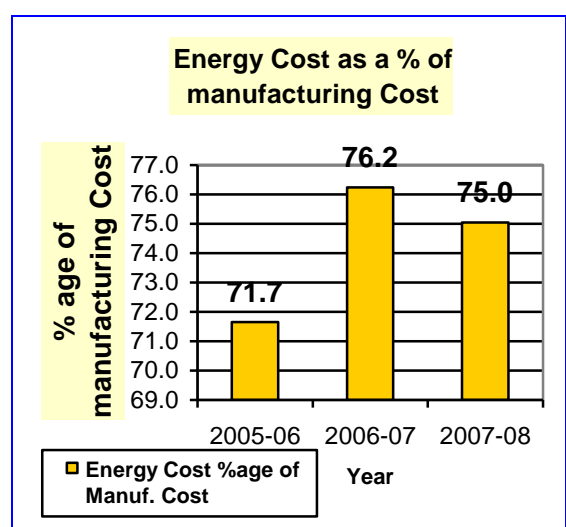
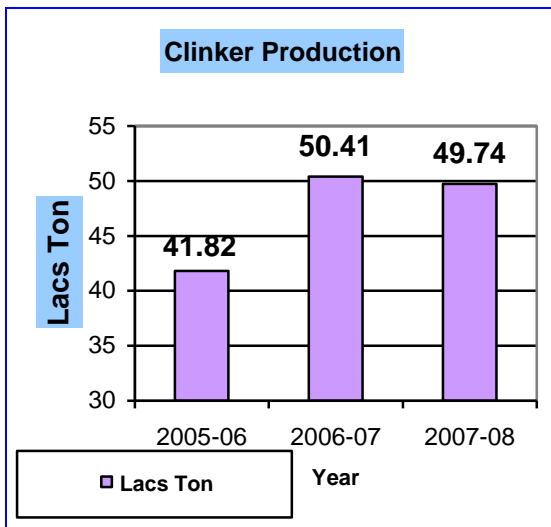
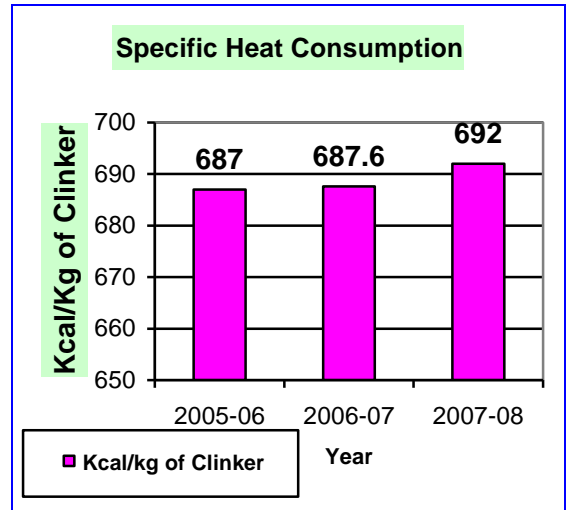
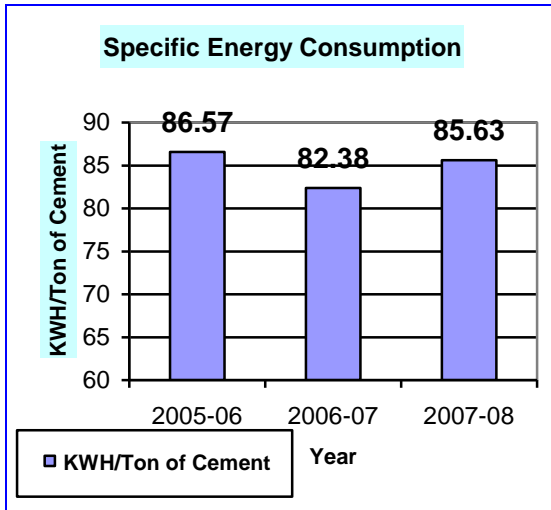
Gujarat Cement Works is eco friendly with elaborate pollution control facilities and is certified for ISO: 9001 – 2000, ISO: 14001 – 1996 & OHSAS: 18001 – 2007 for Cement Manufacturing Quality System, Environment Management system & Occupational Health & Safety Assurance Series respectively.

### (ii) ENERGY CONSUMPTION

Gujarat Cement Works has two cement production lines with a total annual manufacturing capacity of 50 Lacs Ton of Clinker and 40.0 Lacs Ton of Cement with Maximum Running Load of **58 MW**.

It has its own Captive Power Plant of 4 x 23 MW being set up newly. Two units have been commissioned in Apr-08 & Aug-08 respectively and balance two units will be commissioned by March-2009. All-round initiatives, major and minor are being undertaken on specific energy consumption.

SPECIFIC POWER CONSUMPTION DETAILS	UNIT	2005-2006	2006-2007	2007-08
Annual Production-Clinker	Lacs Tons	41.82	50.41	49.74
Annual Production-Cement	Lacs Tons	35.92	35.24	36.24
Total Energy Consumption per Year	Lacs KWH	3664.9	4014.2	4183.7
Total Thermal Energy Consumption per Year	Million Kcal	3004272	3610419	3541470
Annual Turn Over	Rs Lacs	124395	152907	161055
Energy Cost as a % age of manufacturing Cost	%	71.65%	76.24%	75.04%
Specific Energy Consumption	KWH /Ton of Cement	86.57	82.38	85.63
Specific Heat Consumption	Kcal/kg of Clinker	687	687.6	692



**Trends of Power & Fuel consumption, Cement Production & Energy Cost**

### **(iii) Energy Conservation Commitment, Policy and Organizational Setup**

#### **Salient features of Energy Conservation Committee**

**GCW** has an Energy Conservation Committee headed by Dy. General Manager , a Coordinator, Certified Energy Manager and members from each department.

Energy Conservation Committee members study in their respective area & finds Energy Saving Projects, which are being discussed during Energy Conservation Committee Meeting.

Energy Conservation Committee has initiated following activities

1. Energy Monitoring & deviation analysis
2. Adherence to Road Map
3. Identification of Energy conservation projects & their implementation
4. Over all energy cost monitoring & trend (Absolute Value & Specific value)
5. Energy Awards – Recognition from National Level

#### **Energy Monitoring**

1. Energy Monitoring is being done on continuous basis through On-line Energy Monitoring System & PI (Plant Information) system, which is available on local Intranet for instantaneous vales. Energy co-ordinator reports the consumption of energy in various sections on daily basis thro' e-mail.
2. Deviations & area of concern are discussed in daily production meeting
3. Required corrective measures are taken

Energy Conservation Committee has a Road Map for it's functioning.

The following activities as per road map are initiated

1. Loss Reduction
  - Elimination of drives
  - Right sizing of drives
  - Elimination of idle running
2. Periodic Study
  - Machinery efficiency
  - False Air entry study
3. Improvement & Modification
  - Energy Audit
  - Innovative Ideas
  - Best practices adoption

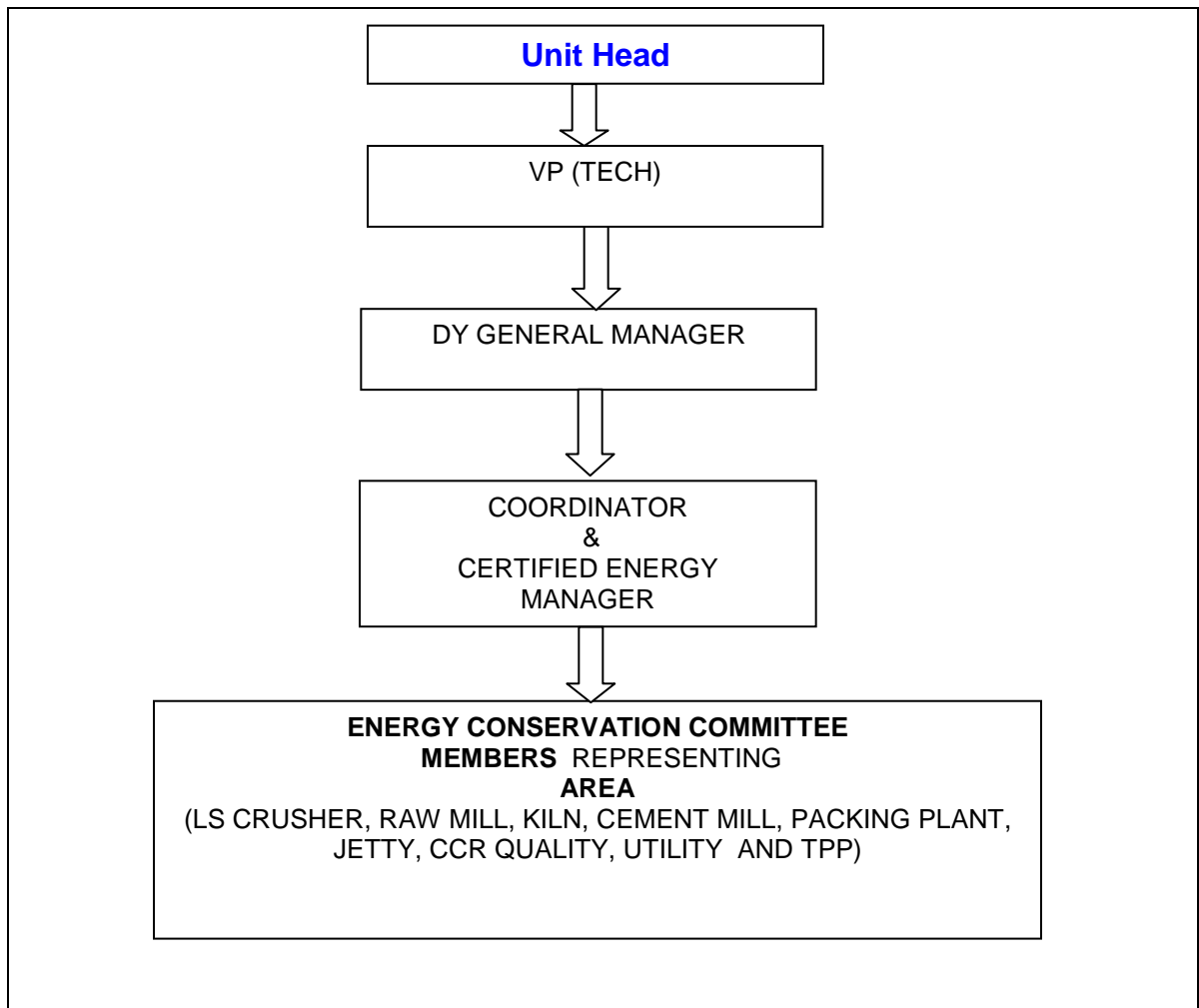
Identified projects are being implemented during available opportunity or during Plant shutdown.

**GCW** is committed to bring down its Specific Energy Consumption every year and accordingly all the corrective measures are being taken.

#### **ENERGY POLICY**

We are committed to continually reduce specific Energy Consumption by:

- Adopting latest technology for process & process equipments
- On line monitoring and controlling of energy parameters on continuous basis
- Encouraging employees for their valuable suggestions on Energy conservation
- Conducting training and awareness programs
- Fostering the habit of using Energy economically and efficiently.



**ENERGY CONSERVATION COMMITTEE**