

Energy Conservation Measures implemented during 2006-2007

1. Steam condensate from laundry equipments is recovered and being used for hot water regeneration then it is used for boiler feed a water



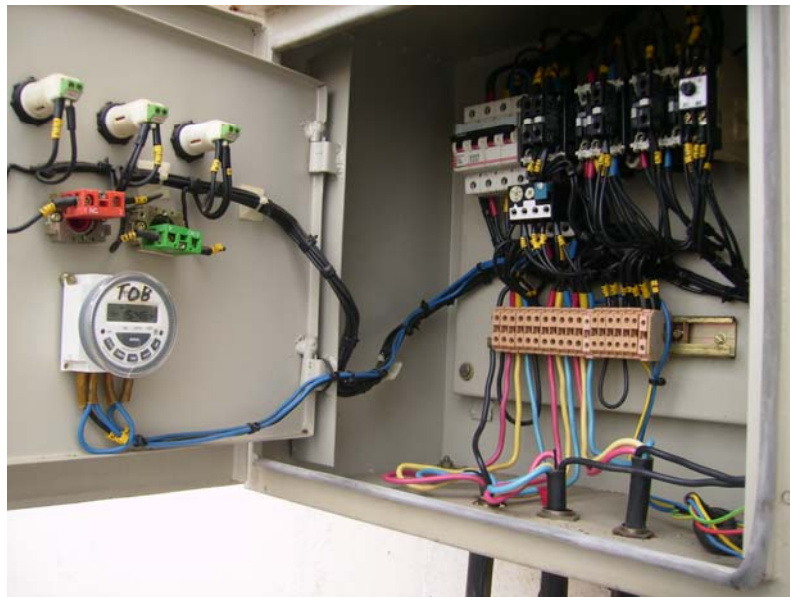
2. All incandescent lamps are replaced with CFL-8 watts



3. Staff café lighting, Ac & TV are controlled by timer.



4. Kitchen exhaust fan and Fresh air fan is controlled by timers.



5. Steam boilers capacity and pressure is reduced.



31. World leader Electrolux machines are used in the laundry



33. CRT Monitors are replaced with TFT-LCD Monitors which is a 60% power saver by default



34. Consistent training being given our boys on energy conservation in our hotel.

