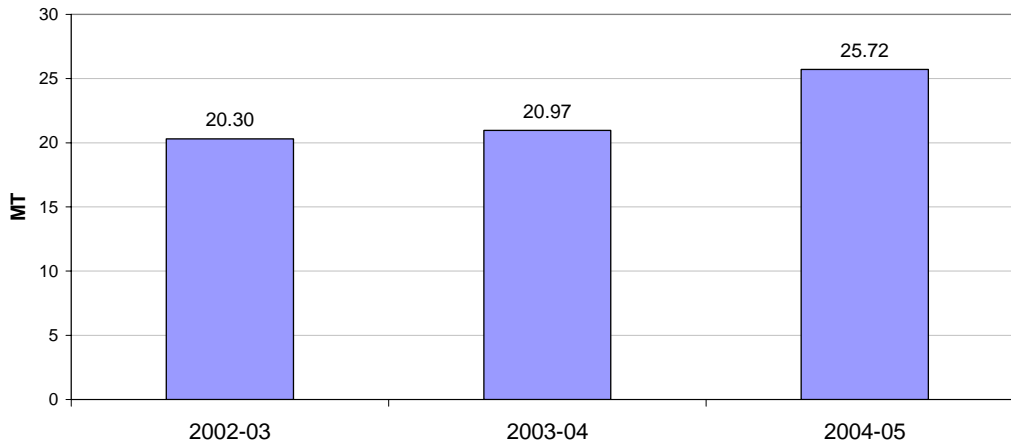


- Carry out regular energy audits through internal / external resources / agencies to identify areas of improvement.”

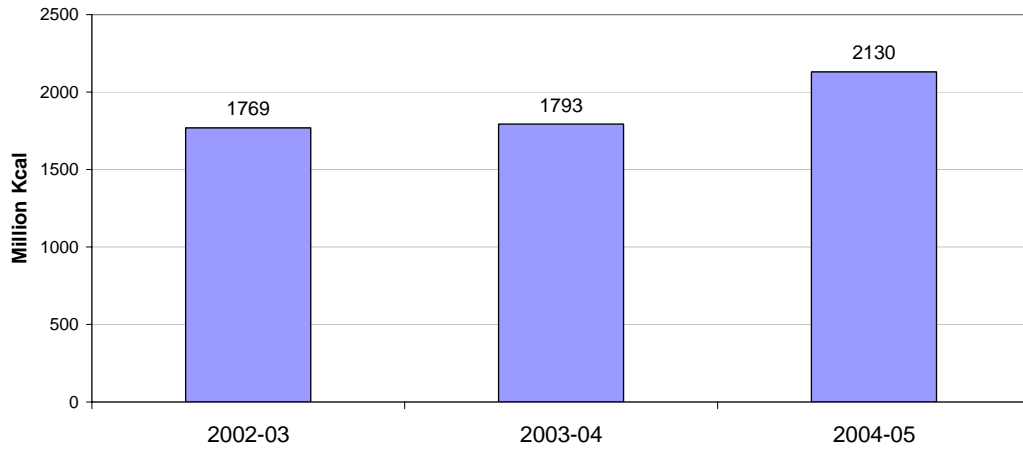
Energy Consumption

	Unit	2002-03	2003-04	2004-05
Annual Production	MT	20.30	20.97	25.72
Total Energy consumption per annum	KWH (lakhs)	1786.08	1766.63	2178.10
Total Thermal energy consumption	Million Kcal	1768.8	1793	2130
Total Manufacturing cost in Rs (lakhs)	Rs (lakhs)	19075.86	19248.01	23338.34
Total Energy cost in Rs (lakhs)	Rs (lakhs)	10873.24	10778.88	13536.23
Energy cost as % of Raw Material cost	%	78%	81%	81%
Limestone Crushing power Consumption	Kwh/MT	1.13	1.38	1.25
Raw Mill Grinding power consumption	Kwh/MT	18.83	18.31	18.70
Kiln and Coal mill power consumption	Kwh/MT	28.12	23.31	25.06
Cement Grinding power consumption	Kwh/MT	34.53	31.53	35.01

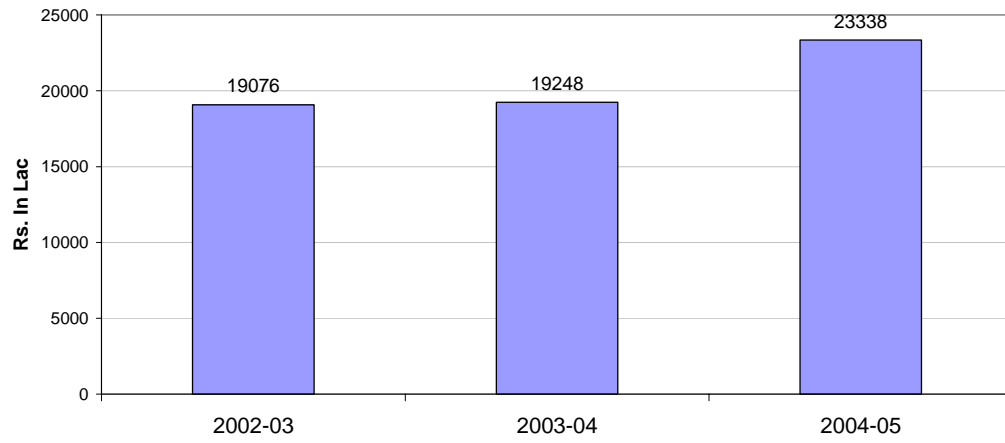
Annual Production



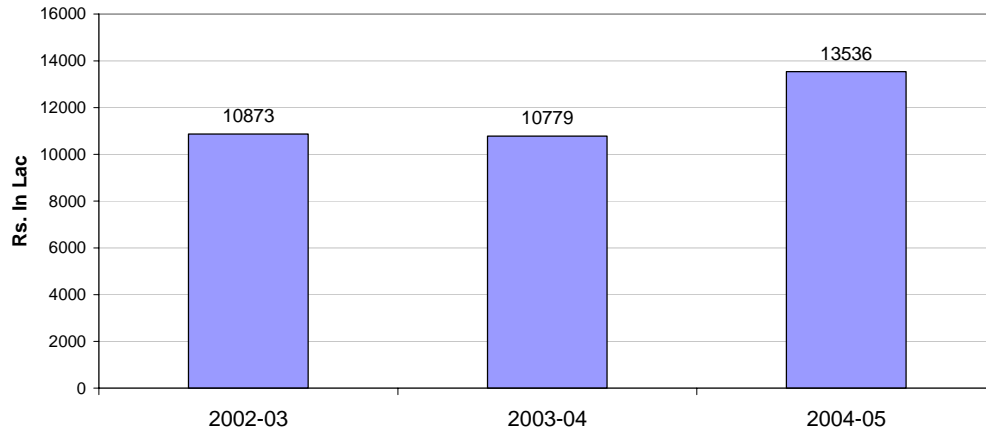
Thermal energy consumption



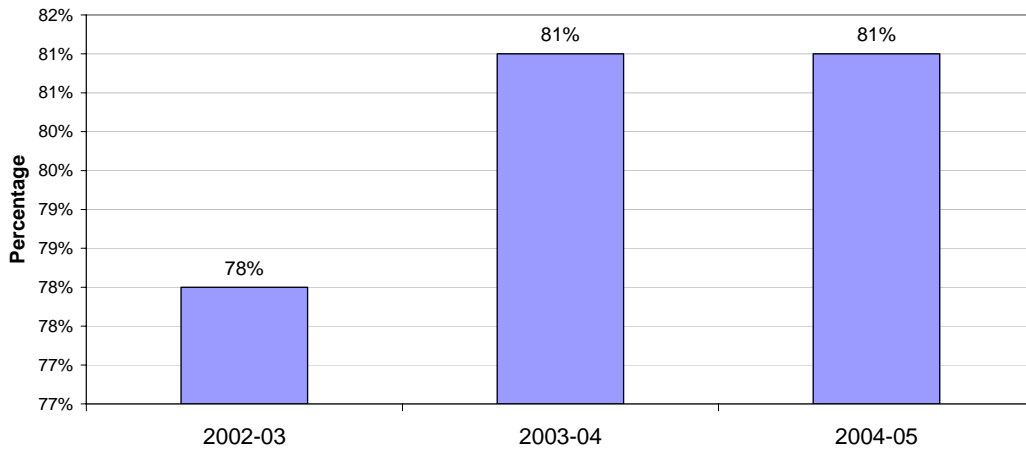
Manufacturing cost



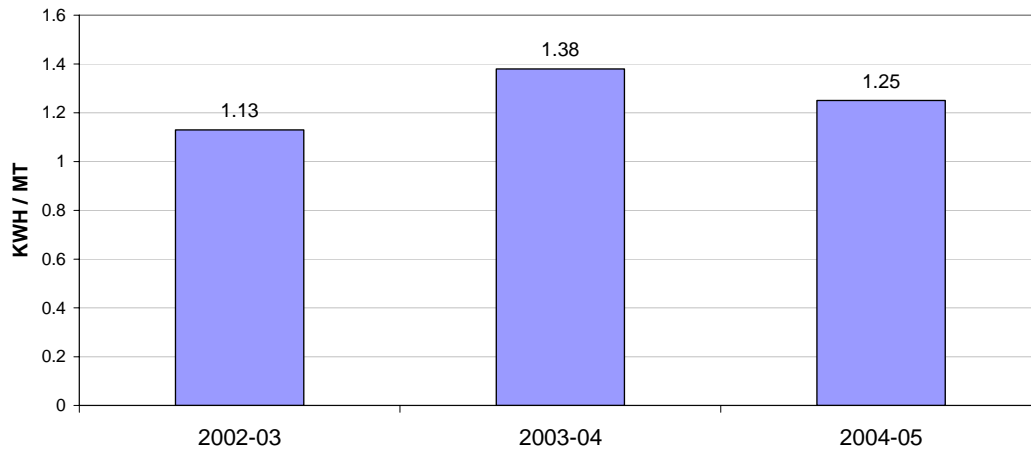
Energy Cost



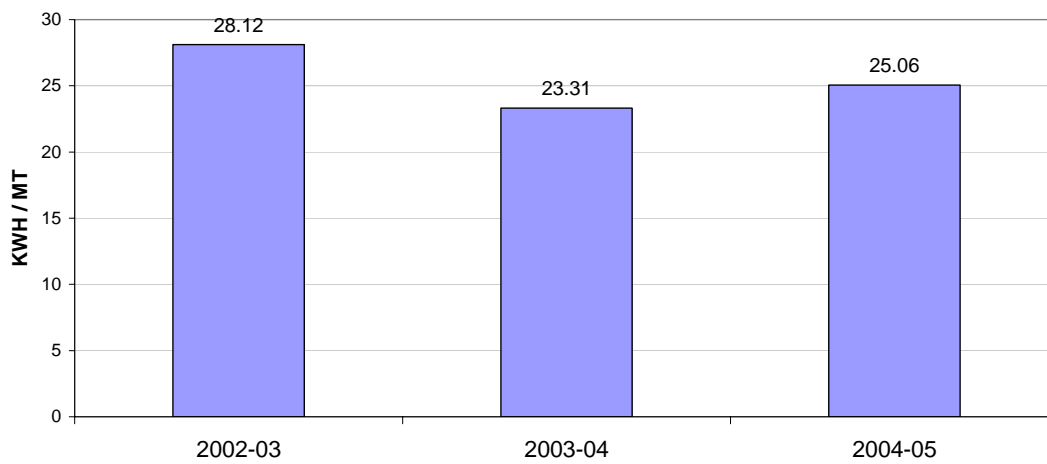
Energy cost as % of Raw Material cost



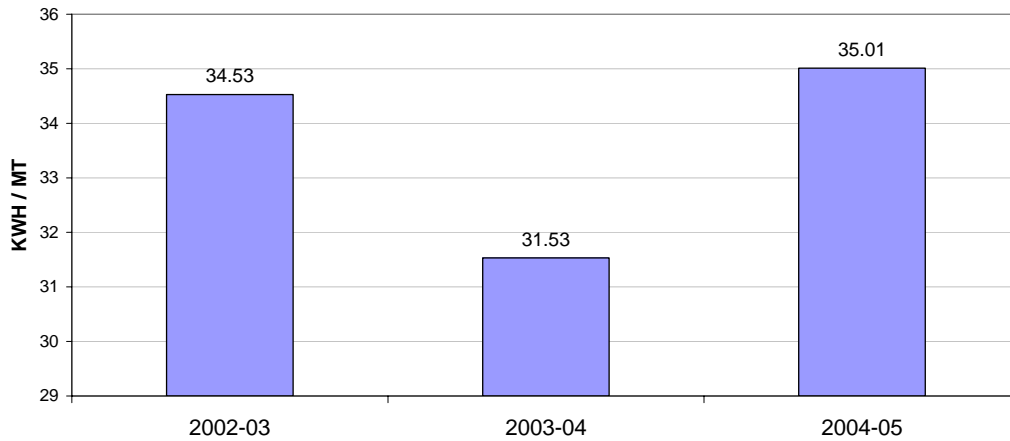
Limestone Crushing power Consumption



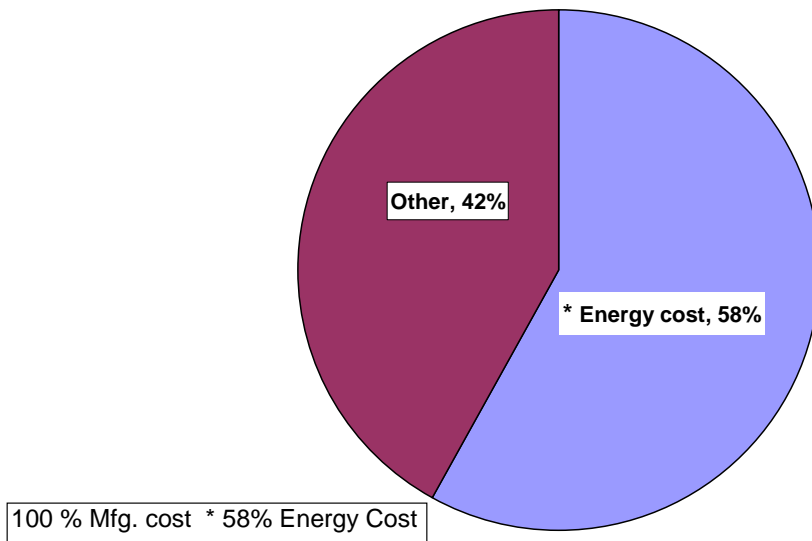
Kiln and Coal mill power consumption



Cement Grinding power consumption



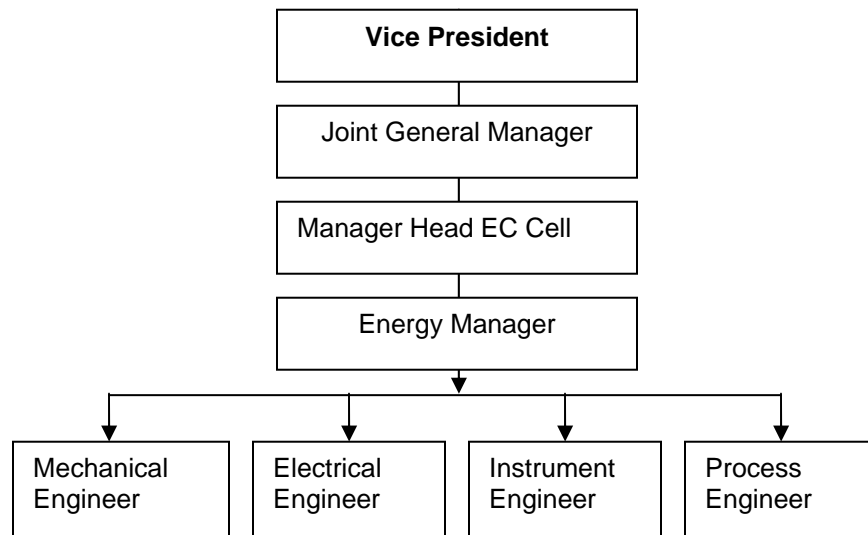
Manufacturing Cost Vs Energy Cost for the Year- 2004-05



Salient Features of Energy Conservation Cell

The unit has Energy Conservation Cell at HCW headed by Manager (Electrical & Instrumentation) assisted by Energy Manager & supported by two engineers from each department forming a team. This Team finds various energy saving potential in their working areas, brings the proposal to Energy Cell for elaborate discussions & brain storming sessions for finalization and implementation. The unit committed to fine tuning operations & maintenance continuously to achieve the goal , technology Upgradation with energy efficient process & equipments and motivating , training and encouraging employees to achieve a target of reducing the power by increasing blended cement production & by increasing proportion of fly ash from 27 to 30 % .

ENERGY CONSERVATION CELL STRUCTURE



Energy Conservation Achievements

HCW has implemented many energy saving proposals of small, medium, & large scale. During 2004-2005 with Energy conservation measures, The unit has saved an amount to the tune of Rs 218 / - Lakhs