



DCM TEXTILES HISAR



UNIT PROFILE

- DCM Textiles, a unit of DCM Ltd., started its production in 1991 and is a part of the Rs. 160 crores DCM Group. DCM Ltd. is headed by Dr. Vinay Bharat Ram, CMD, a famous Industrialist and an eminent Scholar of India. The DCM Group reputed for their product quality, dynamism, business integrity and for quick response to changes in environment.

UNIT PROFILE

DCM Textiles is a Spinning Mill located in Hisar (Haryana) engaged in the manufacturing of 100% Grey Cotton Yarn and Melange Yarns in the count range of 12s to 40s, mainly for knitting use. The unit has a line of new generation machines having a capability of producing good quality yarn.

UNIT PROFILE

The machines are from various renowned manufacturers like M/s. Schlafhorst A.G., M/s. Rieter, M/s. Crosrol, M/s. Lakshmi Machine Works (LMW), M/s. Trumac Mumbai, M/s. Texmaco Howa, M/s. Mafatlal Engineering Industries, M/s. Padmatex, M/s. Vijay Laxmi, Textool & Sieger etc. A modernization drive is underway to further enhance the competitive edge of the unit by installing new ring frames of LMW and additional autoconers.

UNIT PROFILE

To meet the stringent quality requirement, the unit has testing laboratory well equipped with sophisticated equipment like Uster Tester (UT-3 Model) Cascade Wrapping System, Fibramic-900, Projection Microscope and has also implemented the quality system in line with the international standards. It subjects all the purchased items to inspection and testing before acceptance to ensure compliance with quality requirements.

UNIT PROFILE

The unit is supplying yarn to Indian as well as to international market and is in process of further expansion of its international markets. The quality management system for unit has been certified by BVQI since May 1995.

Quality Policy

DCM Textiles is committed to deliver goods and services which satisfy its customers at all times and enhance value of this business for all stake holders through active involvement of all employees and continuous process improvements.

Environment and Safety

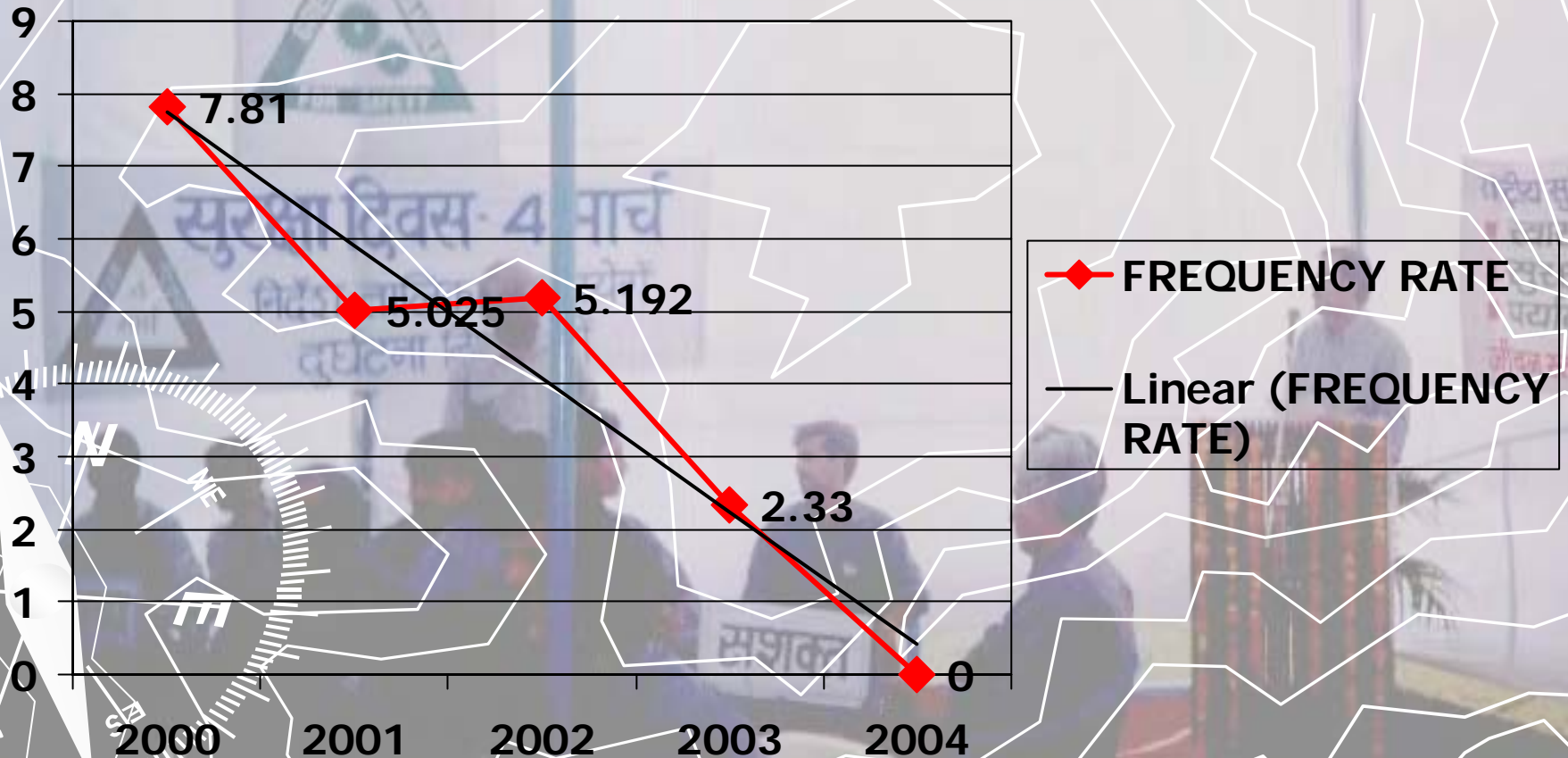


10/27/2004

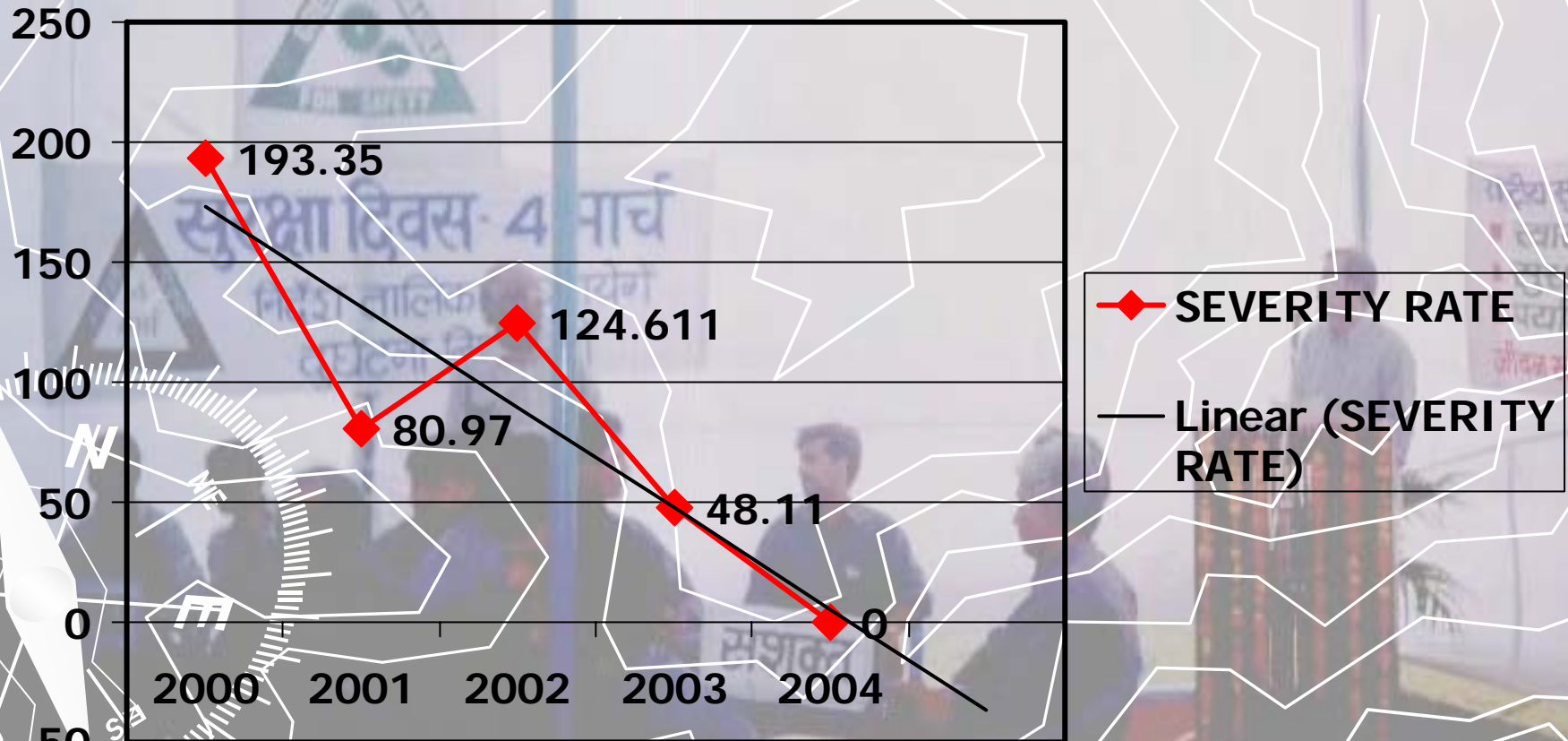
SAFETY HEALTH AND ENVIRONMENT POLICY

“DCM TEXTILES AND ITS ALL EMPLOYEES ARE COMMITTED TO CREATE AND CONTINUOUSLY MAINTAIN SUCH WORKING ENVIRONMENT WHICH IS SAFE, HEALTHY, POLLUTION FREE AND INVIGORATING”

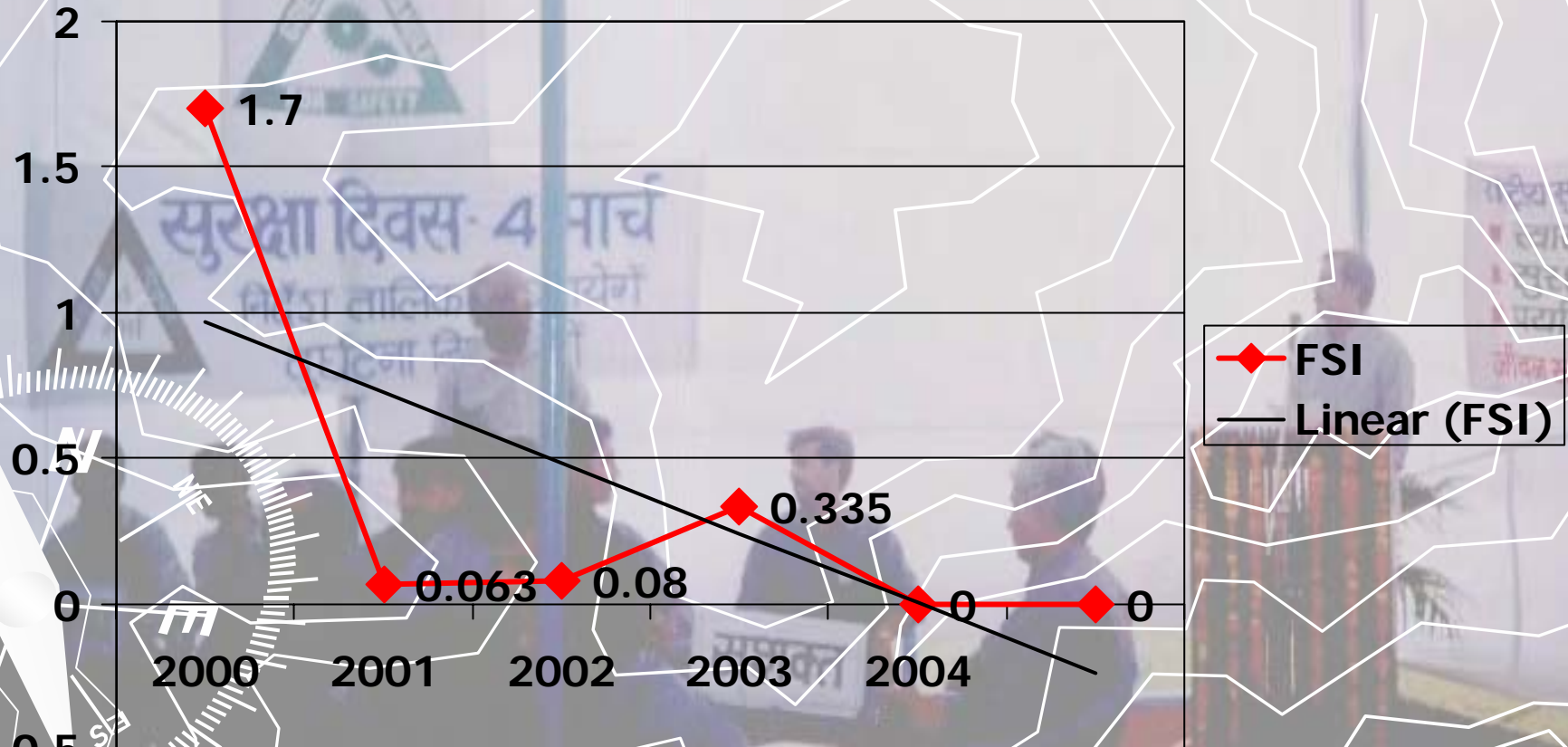
ACCIDENT FREQUENCY RATE ANALYSIS



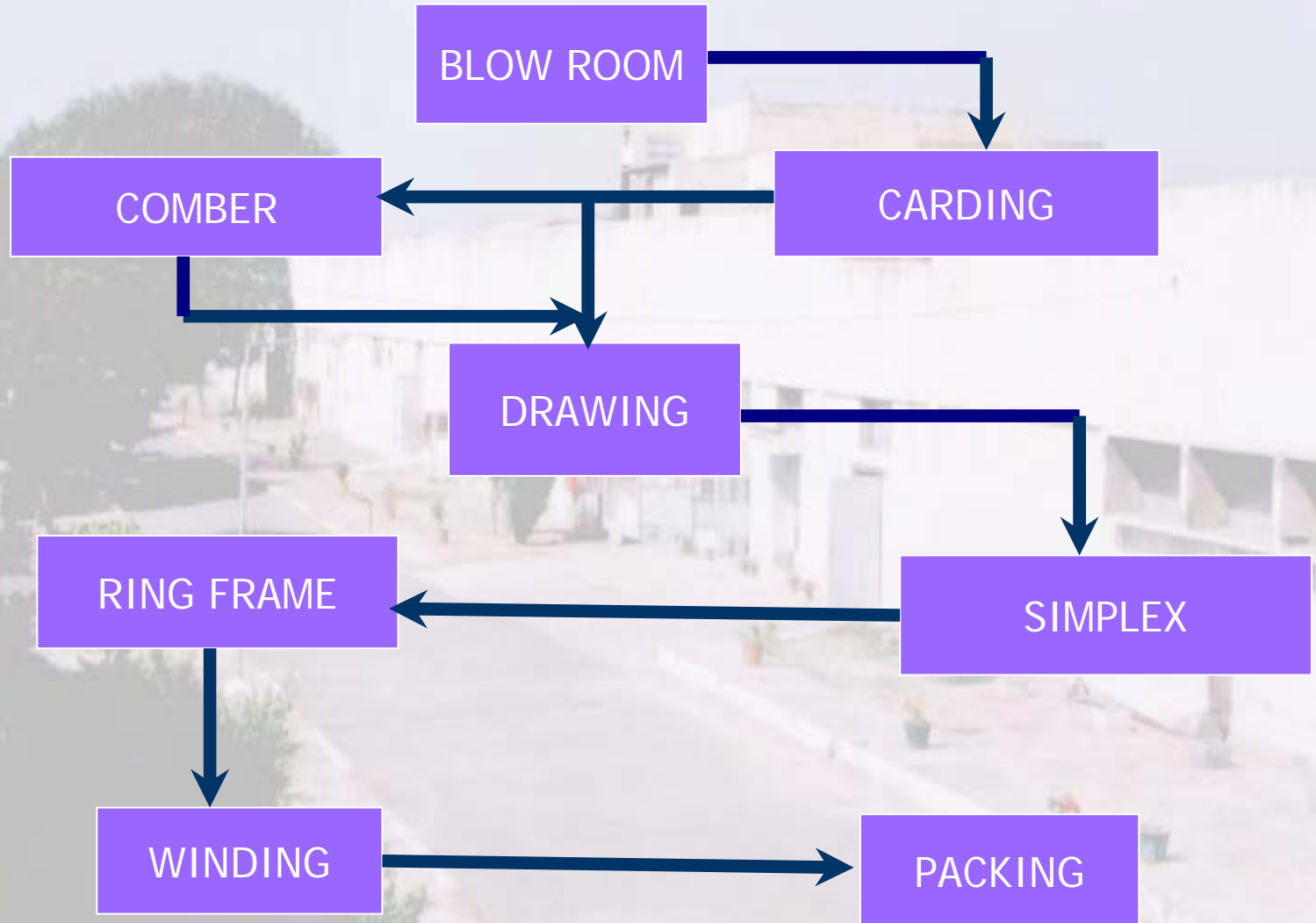
ACCIDENT SEVERITY RATE ANALYSIS



FREQUENCY SEVERITY INDEX



SCHEMATIC DIAGRAM SHOWING PRODUCTION PROCESS



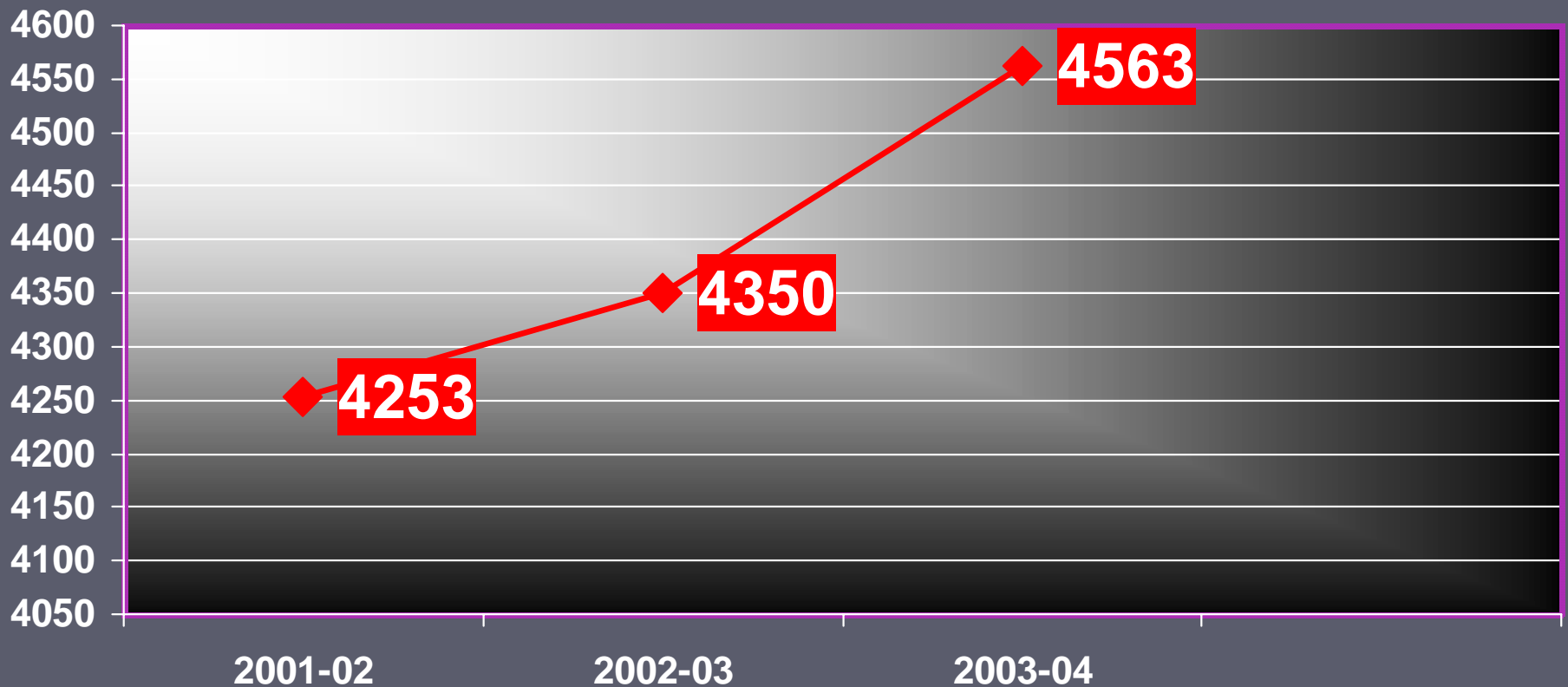
The background of the slide is a faded topographic map showing contour lines and a compass rose. The compass rose is located in the lower-left quadrant and includes directional markers for North (N), South (S), East (E), and West (W), as well as intermediate directions like NE, SE, SW, and NW. The map lines are thin and grey, creating a technical, geographical feel.

ENERGY CONSERVATION

ENERGY CONSERVATION

- ▶ During period 2001 – 2004 DCM has implemented many energy saving measures for conservation of energy. This has resulted to reduction in specific energy consumption and reduction in energy losses.

CONNECTED LOAD DETAILS IN KW

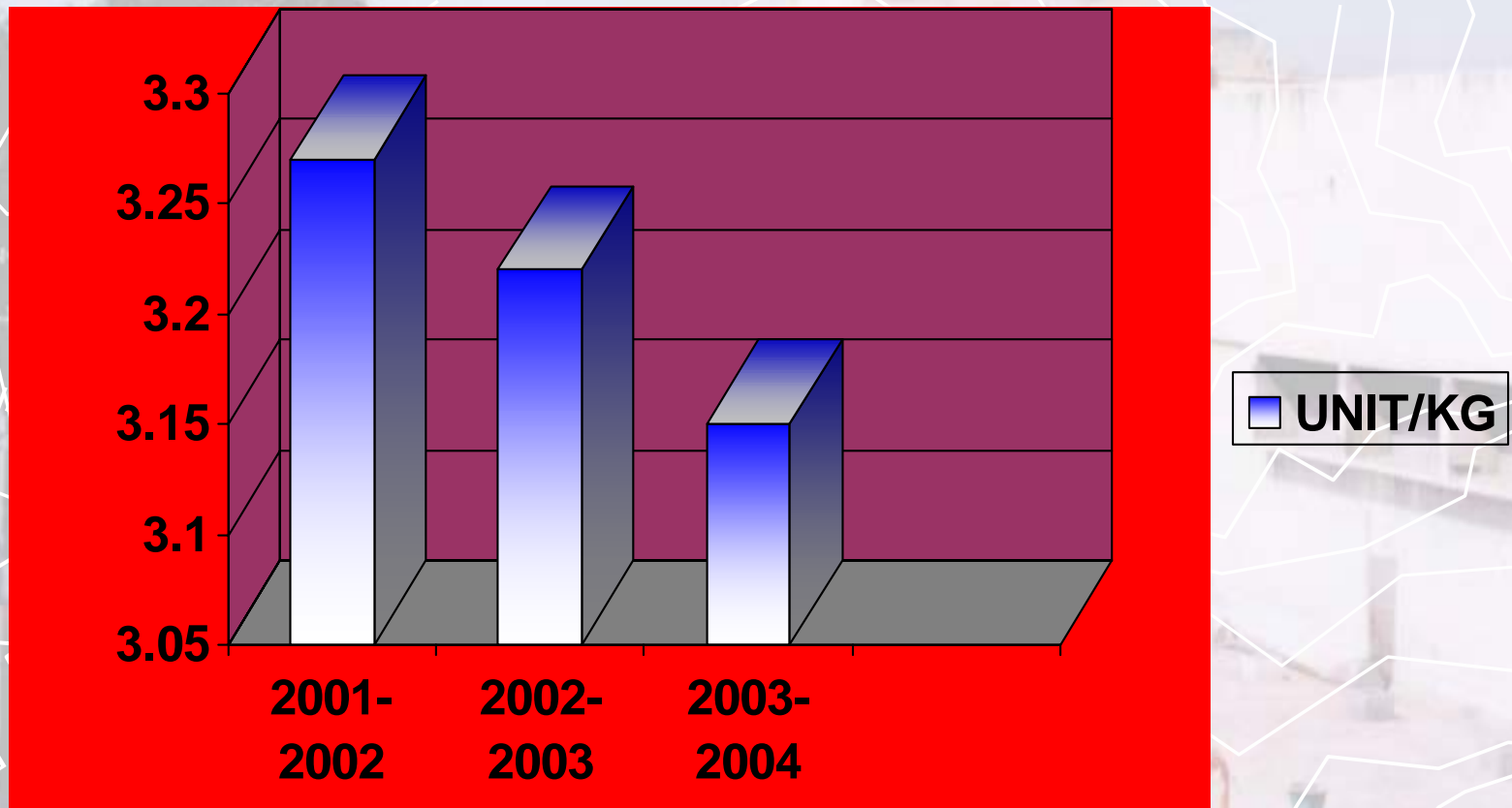


SPECIFIC ENERGY

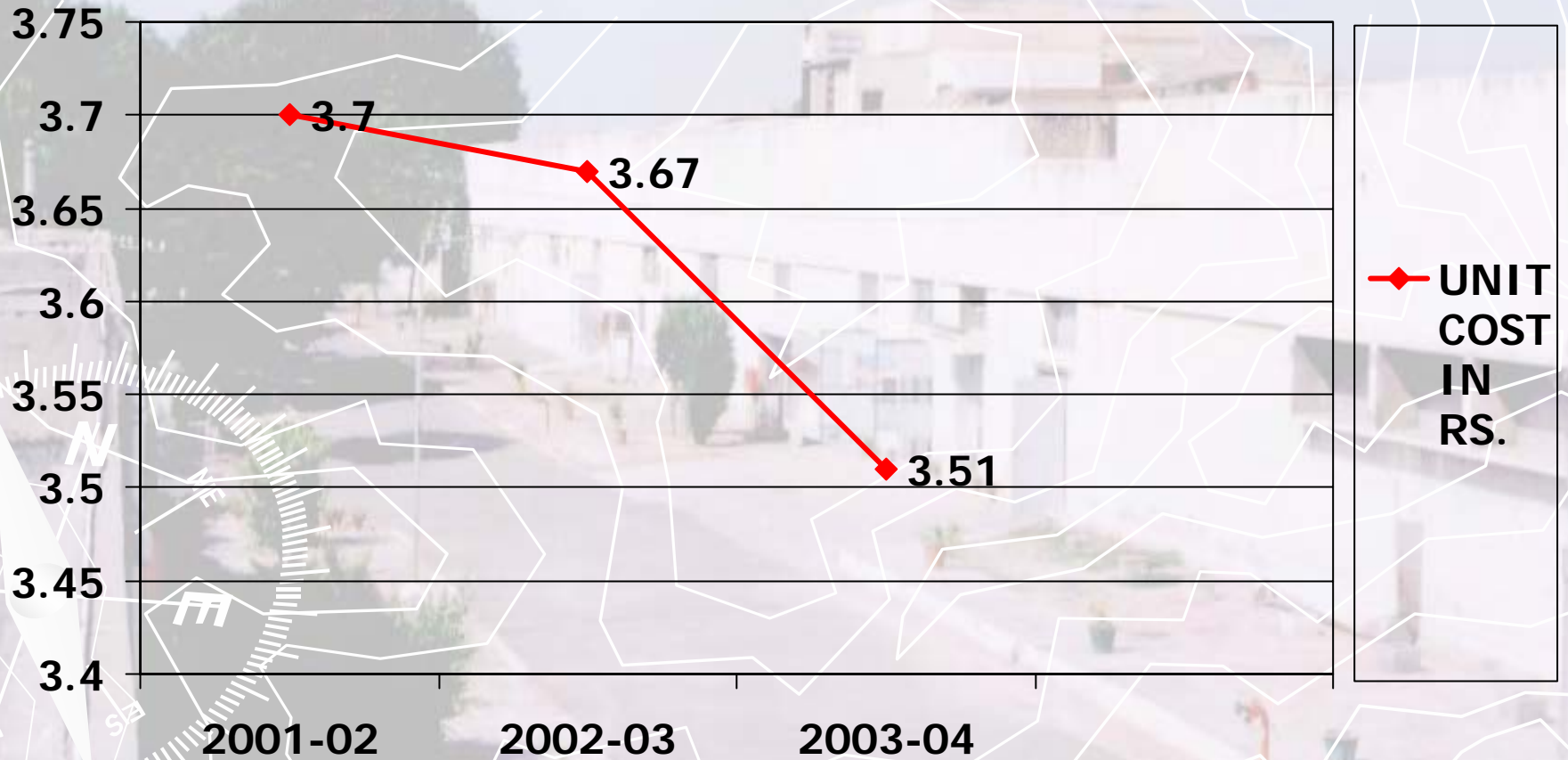
YEAR	2001-2002	2002-2003	2003-2004
ELECTRICITY CONSUMPTION IN MKHh	211.41	221.34	218.72
PRODUCTION IN MT ON AVG. 28 ^S COUNT	6458	6870	6950
UNIT PER KG	3.27	3.22	3.15

SPECIFIC ENERGY

▶ UNIT CONSUMPTION PER KG



UNIT COST



INVESTMENTS

MADE FOR ENERGY
CONSERVATION
MEASURES

TRENDSETTER PROJECT

HEAT RECOVERY UNIT

- ▶ HEAT RECOVERY UNIT INSTALLED AT CAPTIVE POWER PLANT
- ▶ NOW FURNACE OIL HEATED WITH THERMIC FLUID IN PLACE OF ELECTRIC HEATERS
- ▶ INVESTMENT MADE RS. 10 LACS
- ▶ UNIT CONSERVED PER YEAR 2.10 LACS KWh.

EXHIBIT OF HEAT RECOVERY UNIT

TRENDSETTER PROJECT

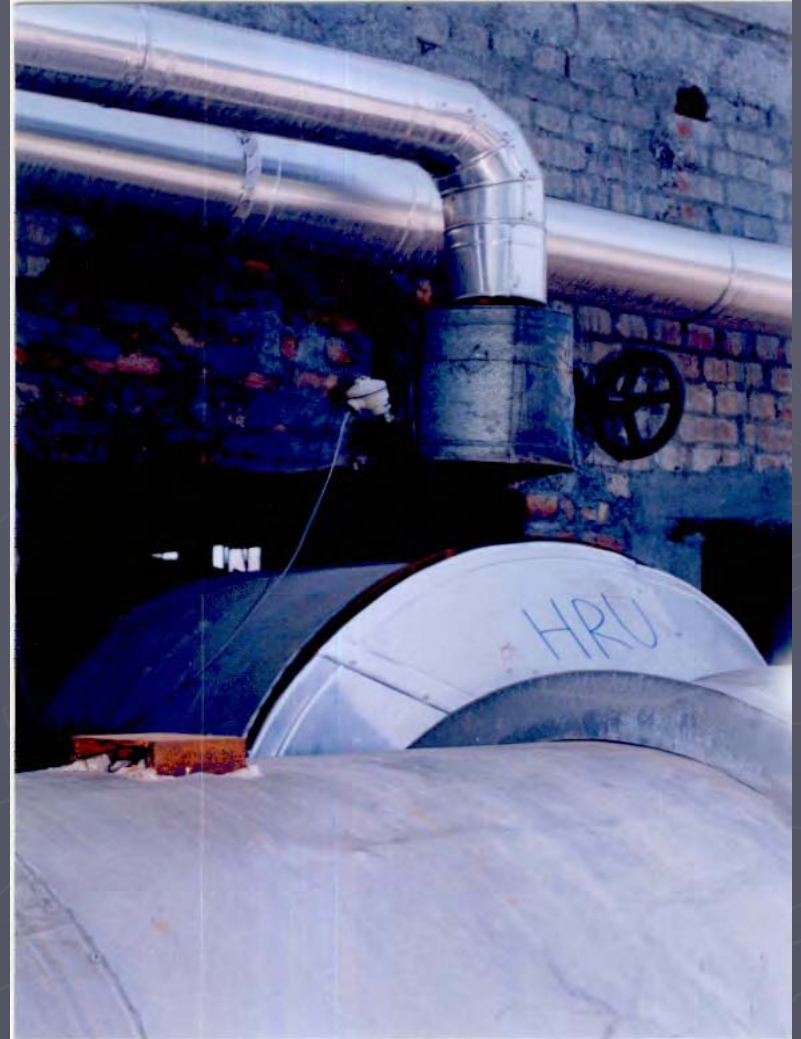
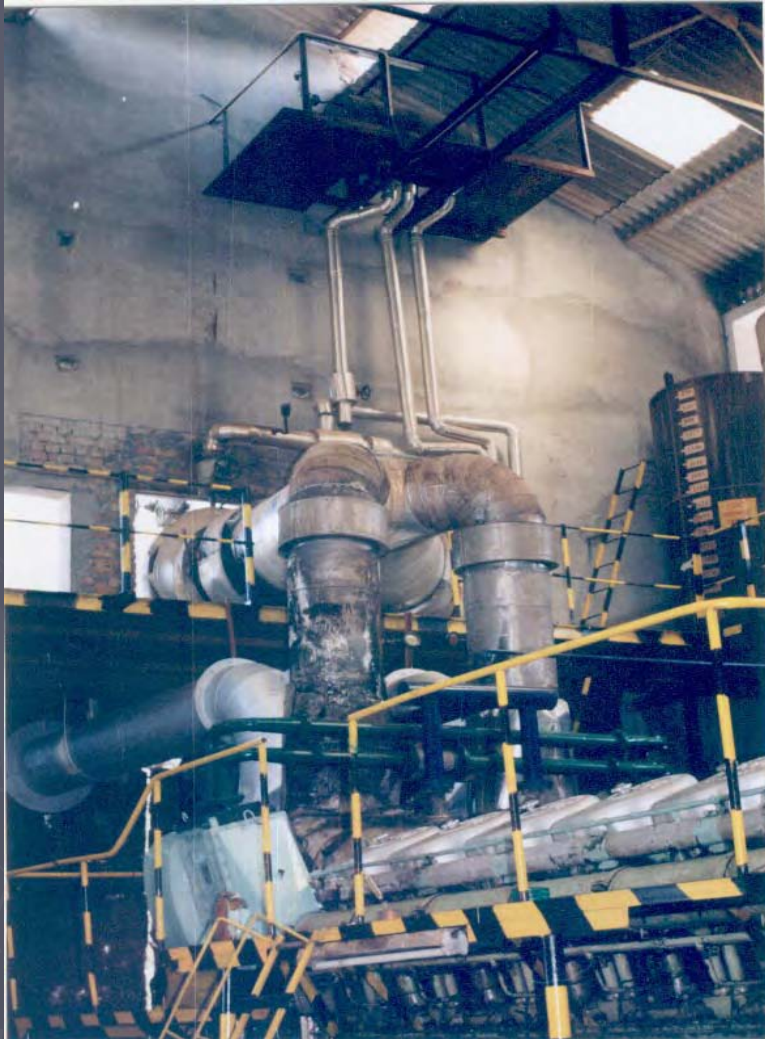


EXHIBIT OF HEAT RECOVERY UNIT

TRENDSETTER PROJECT



EXHIBIT OF HEAT RECOVERY UNIT



REPLACEMENT OF ORDINARY CHOKES

- ▶ *1150 NOS. ORDINARY CHOKES REPLACED WITH ELECTRONIC OPAL MAKE CHOKES.*
- ▶ *180000.*
- ▶ *RS. 7.3 LAKHS PER ANNUM SAVED*
- ▶ *INVESTMENT MADE RS.5,17,500/-*
- ▶ *PAY BACK 0.74 YEAR.*

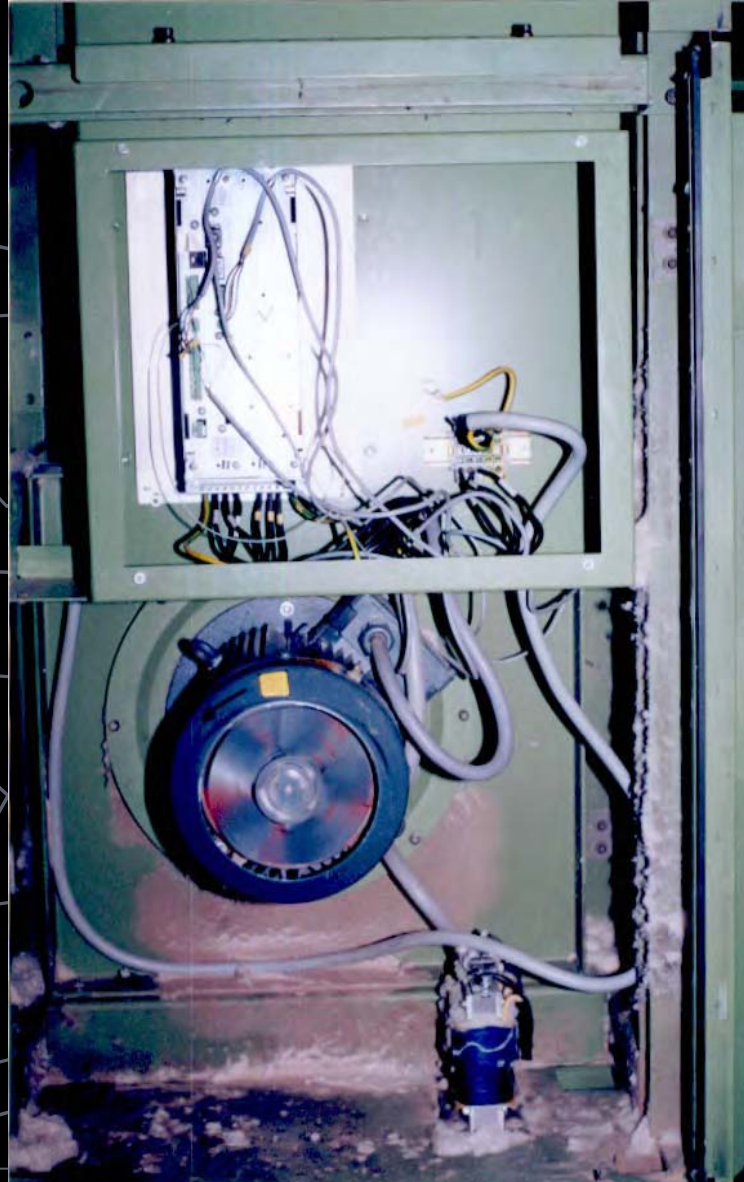
Analysis, pay back and trials made with different combinations as mentioned below.

STUDY OF TUBE RODS AND CHOKES FOR ENERGY CONSUMPTION							
SER. NO.	EQUIPMENT	ENERGY CONSUMPTION WATT /HRS	EQUIPMENT COST IN RS.	WATT SAVING / HRS. REF. TO SR. NO 5	SAVING /YEAR IN K.W. (FOR 350 DAYS 24 HRS WORKING)	SAVING IN RS. @ 3.19	PAY BACK YEAR
1	ASIAN TUBE LIGHT	30.00	760	18.8	158	503	1.51
2	TRULITE 36 WATT TUBE ROD WITH OPAL CHOKE	31.04	505	17.7	149	475	1.06
3	TUBE ROD 40 WATT CHAMPION WITH OPAL CHOKE	32.98	450	15.8	190	605	0.74
4	TUBE ROD TRULITE 36 WATT WITH 36 WATT CHOKE AND STARTER	47.78	249	1.0	8	27	9.29
5	TUBE ROD CHAMPION 40 WATT WITH CHOKE 40 WATT ORDINARY AND STARTER	48.78	165	0.0	0	0	#DIV/0!

INSTALLATION OF FERQUENCY DRIVE ON AUTOCONER MACHINES

- TWO NOS OF FERQUENCY DRIVES
INSTALLED ON AUTOCONER
MACHINE
- INVESTMENT MADE 5.40 LACS
- UNIT CONSERVED IN A YEAR 0.69
LACS KWh
- SAVING IN RS. 2.80 LACS PER YEAR

EXHIBIT OF FREQUENCY DRIVE



10/27/2004

REPLACEMENT OF HEAT LESS AIR DRIER WITH REFRIGERATED DRIER

- ▶ INVESTMENT MADE RS. 2,22,000
- ▶ UNIT CONSERVED 45000 KWh PER YEAR
- ▶ PAY BACK 1.25 YEAR

delair
FDI-850 W

STUDY OF DRIER

BENEFITS OF REFRIGERATION TYPE AIR DRYER

DISCRIPTION	HEAT LESS AIR DRIER	REFRIGERATION TYPE AIR DRIER
CAPACITY	370	500
AIR LOSS	10%	0
POWER CONSUMPTION KWh (CALCULATED FROM POWER CONSUMPTION OF COMPRESSOR 90KW 75 % LOADING)	7.1	1.8
TOTAL RUN HRS. PER DAY	24	24
COST PER UNIT (kwh) Rs.	4.1	4.1
MAINTENANCE COST PER YEAR Rs.	6000	1000
RUNNING COST PER MONTH Rs.	21459.2	5396.6
BENEFIT PER MONTH Rs.		15342.6
COST OF DRIER Rs.		222,000
PAY BACK TIME (MONTH)		14

COOLING TOWER FANS

- ▶ ARRANGEMENT MADE FOR AUTOMATION OF CPP AND COMPRESSOR COOLING TOWER FANS
- ▶ CIRCUIT DESIGNED AND FABRICATED IN HOUSE
- ▶ AUTOMATION IS BASED ON TEMPERATURE
- ▶ INVESTMENT MADE RS 5000/-
- ▶ UNIT CONSERVED IN A YEAR 25600 KWh

AUTOMATIC VOLTAGE REGULATOR



- ▶ 400 KVA AUTOMATIC VOLTAGE REGULATOR INSTALLED AT AUTOCONER SECTION FOR AUTOCONERS IN PLACE OF SIX. NOS OF STABLISERS.
- ▶ INVESTMENT MADE RS 1.80 LACS
- ▶ UNIT CONSERVED 12000 KWh PER YEAR

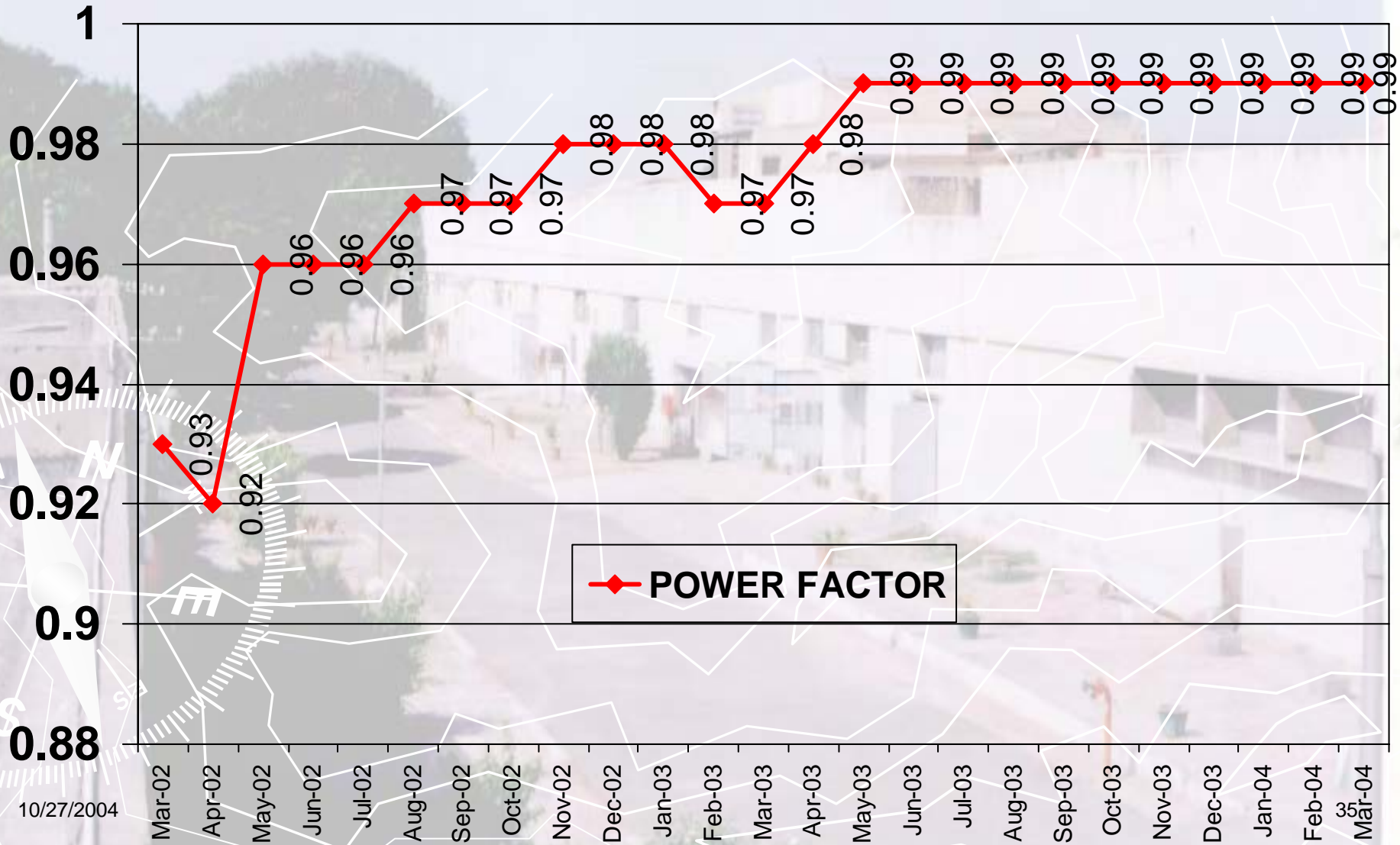
EXHIBIT OF AUTOMATIC VOLTAGE REGULATOR



POWER FACTOR

- ▶ INVESTMENT MADE FOR IMPROVEMENT OF POWER FACTOR.
- ▶ LOSSES REDUCED
- ▶ AVAILING CASH INCENTIVE SCHEME FROM STATE ELECTRICITY BOARD FOR BETTER POWER FACTOR
- ▶ EQUIPMENT LIFE INCREASED

TREND OF POWER FACTOR IMPROVEMENT



10/27/2004



SAVING
MEASURES TAKEN
WITHOUT
INVESTMENTS

MEASURES FOR SAVING WITHOUT INVESTMENT

Project description	Unit conserved	Saving In Rs.
Reduction of fan blade angles of humidification plants in winters	5.4	21.87
Modification of yarn conditioning machine	0.4104	1.66

MEASURES FOR SAVING WITHOUT INVESTMENT

Project description	Unit conserved	Saving In Rs.
Conversion of ordinary lamp indication into L.E.D indications	0.09	0.350
Regular checking of air leakages of pneumatic line and water lines	0.072	0.29

MEASURES FOR SAVING WITHOUT INVESTMENT

Project description	Unit conserved	Saving In Rs.
Control on idle running of machines	0.036	0.15
Conversion of under load motors in to star connection	0.036	0.146

► MEASURES FOR SAVING WITHOUT INVESTMENT

Project description	Unit conserved	Saving In Rs.
Modification in humidification plants pumps circuit	0.36	1.46
Fixing of translucent sheets at CPP shed	0.0288	0.12

The background of the slide is a photograph of a residential street. It shows a row of multi-story buildings with balconies, some trees, and a paved road. The image is slightly faded to make the text stand out.

Conservation Measures Planned For The Future

Conservation Measures Planned For The Future

- ▶ Replacement of spindles with lower wharve dia spindles Installation energy efficient motors
- ▶ Conversion of electric heater of yarn conditioning machine into thermic fluid heaters.
- ▶ Replacement of ordinary lamps with 20 watt tube fittings

Conservation Measures Planned For The Future

- ▶ Identification of under size and long route cables and rearranging
- ▶ Optimization of water pump sizes
- ▶ FO transportation arrangement in insulated tankers
- ▶ Automation of Street lighting

Conservation Measures Planned For The Future

- ▶ Installation of energy efficient FRP fans
- ▶ Automation of Humidity plants spray pumps
- ▶ Installation of electronics ballasts
- ▶ Arrangement for separate transformer for HSEB 33 kv sub station

Conservation Measures Planned For The Future

- ▶ Installation of SITRA approved energy efficient Textiles Machines' Pneumafil Impeller.
- ▶ Fuel efficiency of captive power plant.
- ▶ Installation of new bore wells

THANK

YOU