

Century Pulp And Paper Lalkua Nainital

COMPANY PROFILE :

Century Pulp and Paper, a unit of Century Textiles and Industries Ltd. Is flagship company of B.K. Birla group of industries . The company is an ISO- 9001 :2000 and ISO- 14001 certificated unit and has established it's brand very well in the domestic and overseas market ; with excellent quality of it's products i.e. Writing Printing Papers and Dissolving/ Paper Grade Pulp. The company has the following installed capacities:

Rayon Grade/ Paper Grade Pulp	: 31320 TPA
Writing & Printing Papers (wood)	: 37250 TPA
Writing & Printing Papers (Bagasse)	: 84600 TPA

A State Of The Art Technology for Bagasse pulping, sound Environment practices and excellent Product Quality are the core competencies of the company.

Energy Consumption :-

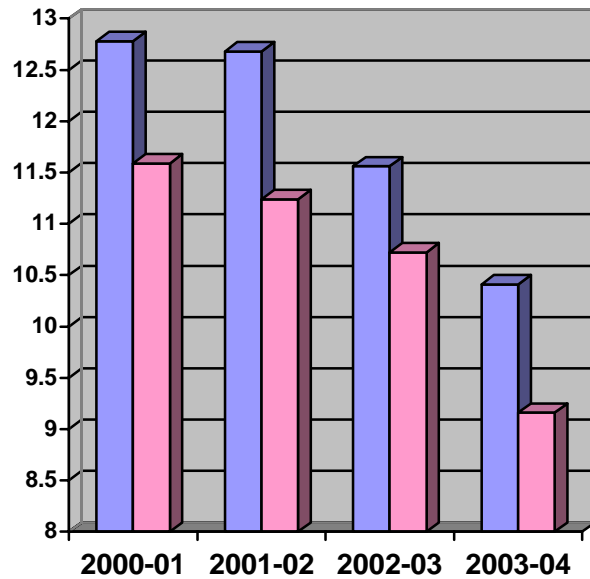
The power requirement of the plant is met by a 7500 MVA grid connection from UPCL and 21 MW & 6.8 MW own turbo generator sets. The plant consumes approx 6 lakhs units per day, 90% of which is met by own generation . The daily thermal energy inputs are from 600 tons of coal and RFO. Black Liquor & Pith generated as liquid & solid wastes are also used for meeting steam and power requirements of the mill.

The annual energy bill of the company is **20.64 %** of the manufacturing cost.

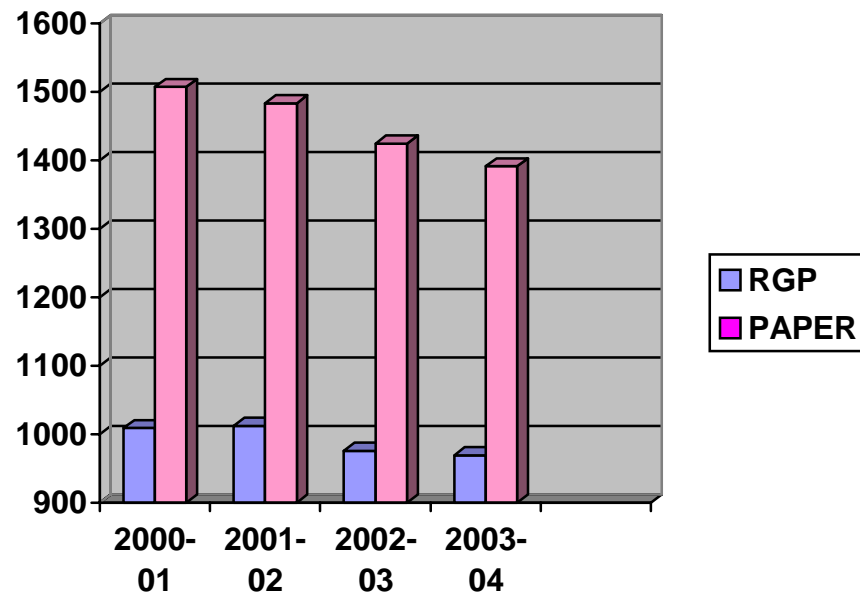
Because of continuous energy conservation efforts , plant optimization and adopting technological advances, there has been a continuous reduction in specific energy consumption.

ENERGY CONSUMPTION TRENDS :

UNITS/TON	2000-2001	2001-2002	2002-2003	2003-2004
RGP	1009	1012	976	969
PAPER	1507	1483	1424	1391
STEAM/TON	2000-2001	2001-2002	2002-2003	2003-2004
RGP	12.78	12.68	11.56	10.41
PAPER	11.59	11.24	10.72	9.16



STEAM CONSUMPTION TREND



POWER CONSUMPTION TREND

ENERGY CONSERVATION COMMITMENT POLICY AND SET UP

CPP has accorded high priority for energy conservation from the inception. Accordingly for energy conservation, a cell consisting of all energy producers & consumers is formed. The objective of the cell is to coordinate the steam and power requirement of the mill, study the causes of variance in consumption figure with targets on daily basis and take corrective measures. The cell also identifies energy conservation schemes and monitors their progress.

The energy conservation is a part of our environmental policy. Some of the major energy saving projects implemented by us are :

- Capacity utilization continuously increased
- Fine tuning of pumps
- Installation of VFD'S
- Optimization of voltages & frequency of own generation.
- Optimization of operating procedures for Agitator, Depithers
- Energy efficient lighting practices

CPP also believes that apart from energy conservation lot of savings can be generated by effective utilization of plant capacities. The thrust is on continuous plant operation without any unscheduled stoppages.

ACHIEVEMENTS:

We have identified and implemented **90 schemes in the last 3 years with an investment of Rs 1109.64 and resulting into a savings of Rs 1891.53. The specific energy has a reducing trend.**

Appreciating our efforts IPMA awarded us **ENERGY CONSERVATION AWARD** for the year 2002.
CII identified us as “**Energy Efficient Unit** “ for the year 2003-2004

ENERGY CONSERVATION PLANS & TARGETS:

The following measures are planned to be undertaken in future:

- 1) Implement the 4 energy conservation schemes identified by DSCL & Ingersoll Rand during their plant energy audit in 2004. These schemes require an investment of **Rs 272 lacs** and will result into annual savings of **Rs 186 lacs.**
- 2) Implement the recommendation of M/S ECO pumps for Vacuum system of M/C III.
- 3) The incoming Black Liquor from the plant contains Silica which can be removed by clarifying the incoming liquor in a Clarifier. This would prevent deposits in the Evaporator tubes and result in savings due to proper heat exchange. The scheme requires an investment of Rs 120 lacs and would yield an annual savings of Rs 45 lacs.
- 4) We generate pith as solid waste and at present partially is used as fuel. The rest is disposed. We plan to install a pith fired boiler and reduce our coal consumption.

ENVIRONMENT & SAFETY :

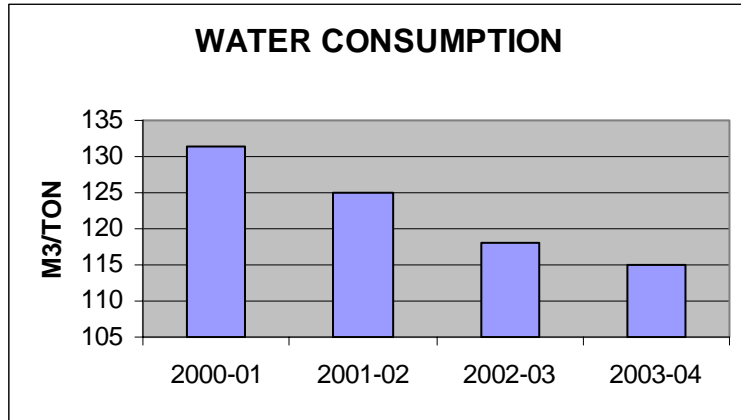
Preserving and protecting the environment is a top priority at century. We are always sensitive to our bio-diversity of the soil, water and air around us. The power plant features an efficient system for reducing Air emissions. Electrostatic Precipitators has been installed to remove particles from recovery Boilers, Coal- fired Boilers and Lime Kiln flue gases.

In strict adherence to the standards and guidelines, the effluents are treated in a modern ETP which is recognized as a Model Plant for its efficiency and performance.

Company 's adoption of a systematic approach to the Environment matters including Waste Minimization, Water- Recycling and Re-use programs of the by –products has facilitated the company in getting the ISO-14001 Certification for it's Environment management System Company's friendship with Environment has also reflected in it's Bagasse-based papers being licensed

for **ECO** Labeling a distinct honor to be attained.

Water consumption trend is as shown



Century's Socio-Forestry venture, to scientifically grow large – scale plantation to Meet the future Raw Material requirement reflects company's commitment towards sustainable development. The company maintains and distribute quality saplings to farmers and offers technical support. Massive plantation and Green belt has been developed within and around the company premises.

The employees are very conscious about the safety aspect of the mill and strive to achieve zero accidents. For this departmental safety committees operate under the control of central safety committee. Work permit system exists for all jobs. Why-why analysis is done for each accident, root causes identified and counter measures are taken. As a proactive approach, frequent safety patrols are carried out to identify unsafe acts and conditions in the plant .

There is continuous thrust for training of employees and regular Training and awareness programs are conducted.