




LED Lighting

A peep into the green illumination of tomorrow



Agenda

- ❖ Introduction
- ❖ LED lighting and advantages
- ❖ Goldwyn Products and Services (LED)
- ❖ Case Study - Lighting the common area of a shopping mall
- ❖ Valued customers of Goldwyn
- ❖ Questions



LED lighting and Advantages

LED lighting and its Advantages

Lighting in India consumes 20% of total power generation. Saving energy on lighting will have the most beneficial impact on the global concern to reduce carbon emissions and prevent global warming. **LED tackles the energy crisis through new energy efficient solutions**

Some advantages of LED lights are listed below:

Salient Feature	Details
Energy efficient	Saves 60-75% power
Long lasting	Life of more than 50,000 hours
More durable	No breaking of filaments
Instant start	Within nanoseconds
Environment friendly	No mercury, lead or other heavy metals, perceived to be toxic while disposal
Infinitely dimmable & controllable	New lighting features make it the next generation light (illustration on next slide)
Weather agnostic	No cold starting trouble
High power factor	Power factor >0.90
'Natural' light	LED lighting is closest to natural light

LED lighting versus other lighting sources

Light Source	FTL	Mercury	Sodium	CFL	LED
Lumens/Watt (Source)	60-90	50-65	65-105	50-70	91-130
Lumens/Watt (Application)	40-60	25-35	30-55	30-50	70-90
CCT	4,000-5,500	3,000-4,500	1800-2500	3400-6500	4000-6500
Rated Life- 50% depreciate	4,000 Hrs	4,000 Hrs	4,000 Hrs	5,000 Hrs	>50,000 Hrs
Driver/Choke Life	10,000 Hrs	10,000 Hrs	10,000 Hrs	10,000 Hrs	>50,000 Hrs
Eco-Friendly components?	Mercury Used	Mercury Used	Mercury Used	Mercury Used	Eco-Friendly
Potential for carbon-Credits	No	No	No	Yes	Yes



About Goldwyn LED

- ❖ Most Experienced Player in Indian LED Industry.
- ❖ Member of IGBC (Indian Green Building Council)
- ❖ An ISO 9001: 2008 quality & CE certified manufacturing company
- ❖ Leading Exporter of LED Lighting to Europe, Africa & U.K.
- ❖ Expertise in providing customized solutions, based on customer's needs
- ❖ Large number of satisfied clients
- ❖ State of art 9000 sq m manufacturing plant with well equipped R&D facility
- ❖ Well equipped Photometric Lab with LM79 testing facility.
- ❖ Usage of Latest Generation High Power LED'S (91-130 Lumens/Watt)
- ❖ Experts in designing of Heat Sink & Secondary Optics



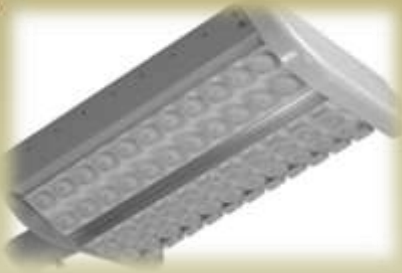
Goldwyn offers lighting solutions to

- ❖ Offices, IT Parks
- ❖ Shopping Malls
- ❖ Residential apartments
- ❖ Street/ Perimeter Lighting
- ❖ Lighting for Industrial warehouses & Sheds
- ❖ Landscape/ Facade Lighting



Goldwyn LED Products & Services

Product Range-I



Street Light



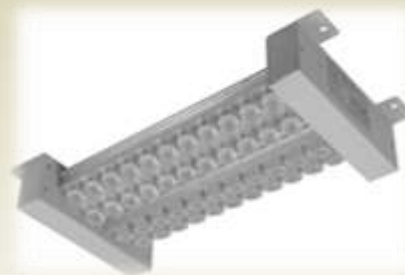
Solar Street Light



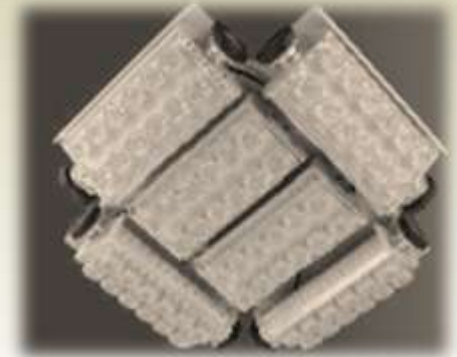
Beam Trimmer



High Bay



Mid Bay



Saturn Bay Light



2'x2' Indoor Light



1'x4' Indoor Light



Down Lighter

Product Range-II



GU10



MR 16



LED Bulb



Wall Light

LED UPLIGHTER FOR GARDENS,
LANDSCAPING



Garden Up lighter

LED WALL LIGHT FOR
RAILWAYS APPLICATIONS



Pit Light & Cat walk Light- for
Railways



Product Range-III



Garden Hat Top



Spot Light



Strip Batten



Point large



75mm Square



Lantern



Bulled Eye



Orbit Round

Light Design Consulting services

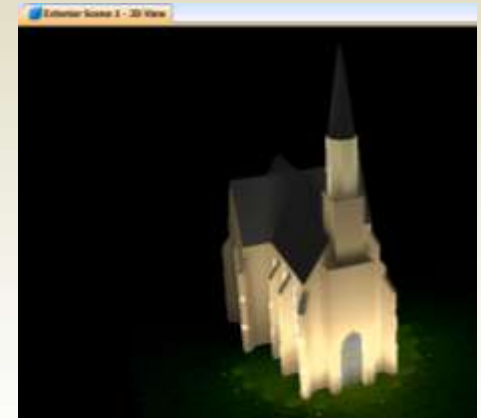
- ❖ Goldwyn is dedicated to serving clients by providing the expertise in creating the latest in innovative, environmentally friendly interior and exterior lighting designs.
- ❖ Always exploring new technologies and techniques, Goldwyn collaborates with, designers, architects, engineers, manufacturers, building owners, home owners and a bunch of creative people to provide effective and innovative solutions.



**Floor
architecture**



**Floor section
LED output**



**External
illumination**



Objective

- To reduce the energy usage
- To reduce the Carbon foot print

Our Valuable Customers





Thank You